

Courses for MSHA and the Mining Industry



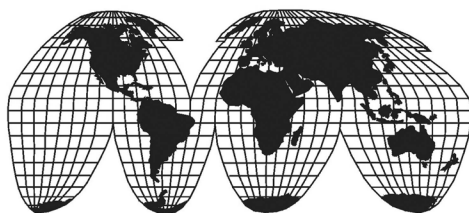
U.S. Department of Labor
Mine Safety and Health Administration
National Mine Health and Safety Academy

FY 2011



Dedicated to the Health and Safety
of the Nation's Miners

Visit the Mine Safety and Health Administration
Web site at www.msha.gov



Contents

Page

Courses and Seminars/Workshops by Topic.....	iii
Welcome.....	1
History	2
The Academy's Purpose and Goal.....	2
Academy Organization	3
Academic Programs	9
Academic Life.....	11
Student Life	13
Fees and Billing.....	15
Travel to the Academy.....	17
Training Courses	19
Metal/Nonmetal Inspection Courses	
Journeyman Training.....	21
Metal/Nonmetal Mine Safety and Health Inspectors Retraining.....	35
Metal/Nonmetal Entry Level Mine Safety and Health Inspectors Training.....	36
Coal Inspection Courses	
Journeyman Training.....	39
Coal Mine Safety and Health Inspectors Retraining	58
Coal Entry Level Mine Safety and Health Inspectors Training	60
Computer Training Schedule.....	65
Certification and Qualification Courses	71
General Courses for MSHA and the Mining Industry	77

Seminars/Workshops for MSHA and the Mining Industry	95
Technical Specialists Training.....	103
Courses and Seminars/Workshops - Alphabetically.....	105
Schedule of Academy Events.....	107
Suggestion Form for New Courses	113
Enrollment Form	115
Other Available Catalogs	117

Courses and Seminars/Workshops By Topic

Page

Accident Prevention and Investigation Courses

Accident Prevention Techniques	78
Mine Accident Investigation and Report Writing.....	30, 49
Mine Accident Investigation Techniques.....	88
Root Cause Analysis Workshop	93

Certification/Qualification Courses

Annual Retraining for Impoundment Qualification	72
Qualification for Impoundment Inspection	73
Respirable Coal Mine Dust Sampler Calibration/Maintenance Certification.....	74
Respirable Coal Mine Dust Sampling Certification.....	75

Computer Courses

Inspector's Portable Applications for Laptops (IPAL) Review	
Coal	46
Metal/Nonmetal	28
Microsoft® Excel 2007 – Basic.....	66
Microsoft® Excel 2007 – Intermediate.....	67
Microsoft® PowerPoint 2007	68
Microsoft® Word 2007	69

Electrical Courses

Electrical Hazards.....	24
Electrical Safety for Coal Miners	42, 79
Electrical Safety for Metal/Nonmetal Miners.....	80
Training for New Electrical Specialists	55

Industrial Hygiene Courses

Hazard Communication (HazCom).....	81
Industrial Hygiene.....	45
Industrial Hygiene: Sampling for Respirable Silica Dust and Noise	83
Intermediate Toxicology.....	85
Noise Hazards, Regulation, and Control	51, 92

Instructor Courses

Instructor Training Workshop (Part 48).....	84
---	----

Mine Rescue Training Courses

Mine Rescue Training.....	91
---------------------------	----

Mine Safety Courses

Blasting (Surface) (Coal)	41
Blasting (Surface) (MNM).....	23
Ground Control Hazards.....	26
Haulage (Surface) (Coal).....	44
Haulage (Surface) (MNM)	27
Hoists and Elevators.....	82
Introduction to Mining	86
Longwall Mining and Inspection Procedures	47
Marshall University Masters of Safety Degree (Mining Emphasis).....	29, 48, 87

Mine Safety Courses (continued)

Mine Construction, Maintenance, and Repairs Safety	89
Mine Elevator Inspection Program Training Module I.....	31, 50, 90
Roof Control Seminar	52, 99
Slope and Shaft Sinking Safety	53
Surface Facilities and Coal Preparation	54, 94
Tailings Dam and Waste Pile Inspection – Metal/Nonmetal	32
Underground Diesel Equipment/Ventilation.....	56
Underground Haulage, Transportation, and Machinery	57
Underground Ventilation for Metal and Nonmetal Mines.....	33

Seminars/Workshops

Blasting Seminar	96
First Responder Workshop.....	25, 43, 97
Mine Construction, Maintenance, and Repairs Workshop	98
Roof Control Seminar	52, 99
Surface Haulage Workshop.....	100
TRAM/National Mine Instructors Seminar	101

Welcome

Welcome to the 2011 edition of Courses for MSHA and the Mining Industry.

Our Nation's mines produce more material than ever before. Sophisticated machinery and equipment allow miners to work in areas that are often complex and dangerous. Mining technology changes constantly and every mine is unique. The mining industry is experiencing a need for new miners to replace the miners who are retiring and also due to the increased use of mining products. The replacements are inexperienced and must be trained prior to their employment. This is why mine safety and health inspections, technical and engineering assistance, and education and training are such important elements in ensuring a safe workplace. These are the three elements of MSHA's triangle of success.

Up-to-date and practical health and safety training is vital since mining occurs in a hazardous, ever-changing environment where there is little room for error.

The National Mine Health and Safety Academy, in Beaver, West Virginia, is the world's largest institution devoted to health and safety in mining. It is a central training facility for Federal mine safety and health inspectors, mine safety professionals, other government agencies, the mining industry, and labor.

Most of the Academy's courses are open to participants from throughout the mining community. Classes are taught by Academy faculty and associate instructors and specialists from the mining industry, trade associations, colleges and universities, manufacturers, and other government agencies.

Whatever your interest in mine health and safety, you will find useful and practical training at the National Mine Health and Safety Academy.

History

Protecting those who work in our Nation's mines requires an awareness and understanding of the conditions that endanger their health and safety.

This problem was recognized more than 140 years ago when a proposal for a Federal mining bureau was submitted to Congress. It was not until nearly five decades later that a series of deadly mine explosions led to passage of the Organic Act of 1910. That act created the Bureau of Mines.

Laws passed over the next 60 years enlarged the scope of legislation aimed at reducing mining hazards. The Federal Coal Mine Health and Safety Act of 1969 contained provisions for the training of Federal mine safety and health inspectors, as well as establishing education and training for states, mine operators, and miners. The Federal Mine Health and Safety Act of 1977 broadened these provisions to include metal and nonmetal mining. The National Mine Health and Safety Academy supports the requirements of the 1977 Act, and the newly enacted Mine Improvement and New Emergency Response Act of 2006.

The Academy's Purpose and Goal

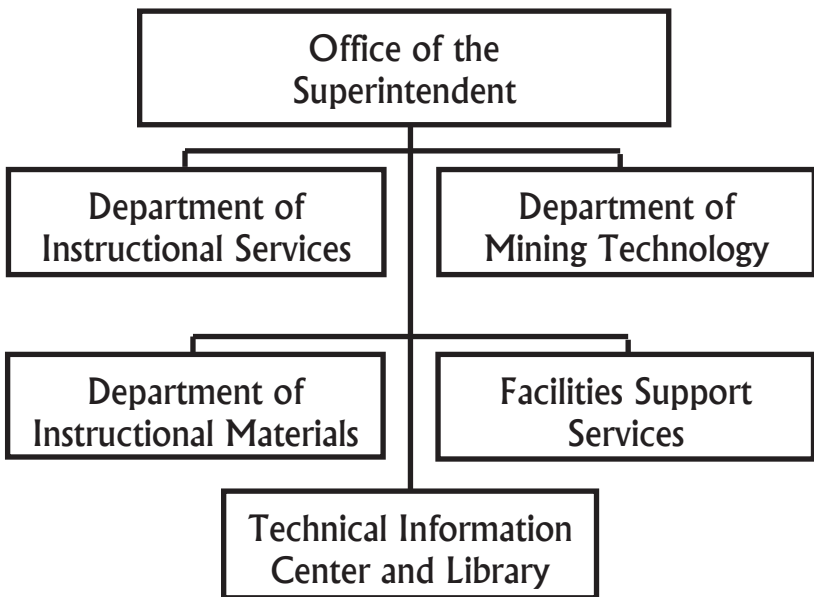
The purpose of the Academy is to design, develop, and conduct instructional programs that will assist in government, industry, and labor efforts to reduce injuries, illnesses, and fatalities in the mineral industries.

All of our programs, seminars, and courses are prepared with one idea in mind – to improve health and safety conditions in mines through education and training. This is our goal. Our success will be measured by the extent to which mine accidents and unhealthful conditions are reduced in future years.

Academy Organization

The National Mine Health and Safety Academy is supported by the Superintendent of the Academy with the help of five major units:

- ◆ Department of Instructional Services
- ◆ Department of Mining Technology
- ◆ Department of Instructional Materials
- ◆ Facilities Support Services
- ◆ Technical Information Center and Library



The **Office of the Superintendent** is responsible for the immediate management and direction of the Academy and for coordination of all training programs.

The **Department of Instructional Services** manages the work activities and resources assigned to the Department in the following areas: (1) developing and teaching courses for MSHA and the mining industry in safety management, accident investigation and report writing, citations and orders, and inspection automation, (2) planning, scheduling, and evaluating

instructional programs, workshops, conferences, and seminars for MSHA and the mining industry, (3) developing and teaching computer courses for MSHA mine inspection and administrative and clerical personnel, (4) scheduling MSHA entry level programs and preparing records of student progress, (5) converting existing courses and working with instructors to develop new courses that can be presented online and in other distance formats.

The **Department of Mining Technology** manages the work activities and resources assigned to the Department in the following areas: (1) developing and teaching courses for MSHA and the mining industry in technical mine safety and health, (2) planning, scheduling, and evaluating instructional programs, workshops, conferences, and seminars for MSHA and the mining industry, (3) planning, scheduling, and coordinating the activities conducted in the Mine Simulation Laboratory, (4) overseeing the on-the-job training program for entry level mine inspectors.

The **Department of Instructional Materials** manages the work activities and resources assigned to the Department in the following areas: (1) developing training and informational publications for MSHA and the mining industry, (2) developing and teaching courses for MSHA and the mining industry, (3) developing audiovisual materials to support MSHA and industry training, (4) producing graphics materials in support of Agency initiatives and training, and (5) printing, storing, and distributing Academy training products and MSHA informational products.

Facilities Support Services aids all Academy programs through coordination of student services, scheduling, recordkeeping, physical plant maintenance, budget and procurement, wellness, contract administration, food service, security, housekeeping, and student registration.

The **Technical Information Center and Library** maintains books, journals, newspapers, technical reports, audiovisual materials, and other information related to mine health and safety. The library gives Academy students and clients immediate and easy access to information sources that can improve the health and safety of miners worldwide.

The Academy Campus

The Academy complex includes classrooms and laboratories to accommodate 600 students and the Residence Hall has 174 lodging rooms.

The **Classroom Building** includes 18 classrooms and 10 laboratories.

The **Distance Learning Lab** will provide remote training at sites throughout the nation.

The **Technical Information Center and Library** is in the Classroom Building.

The **Administration Building** contains faculty and staff offices, the auditorium, cafeteria, and student store.

The **Mine Machinery Laboratory** gives students an opportunity for hands-on health and safety training on different mining and electrical systems.

The **Mine Simulation Laboratory** is an aboveground simulated mine. Here, students can learn about mine ventilation, mine rescue, mine emergency preparedness, and firefighting.

The **Mine Emergency Building** is adjacent to the Mine Simulation Laboratory. It houses mine emergency vehicles and a mine rescue station for MSHA's Mine Emergency Units.

The **Gymnasium** is available for wellness training and leisure time activities. Other wellness facilities at the Academy include tennis courts, a racquetball court, swimming pool, jogging trail, and athletic field.

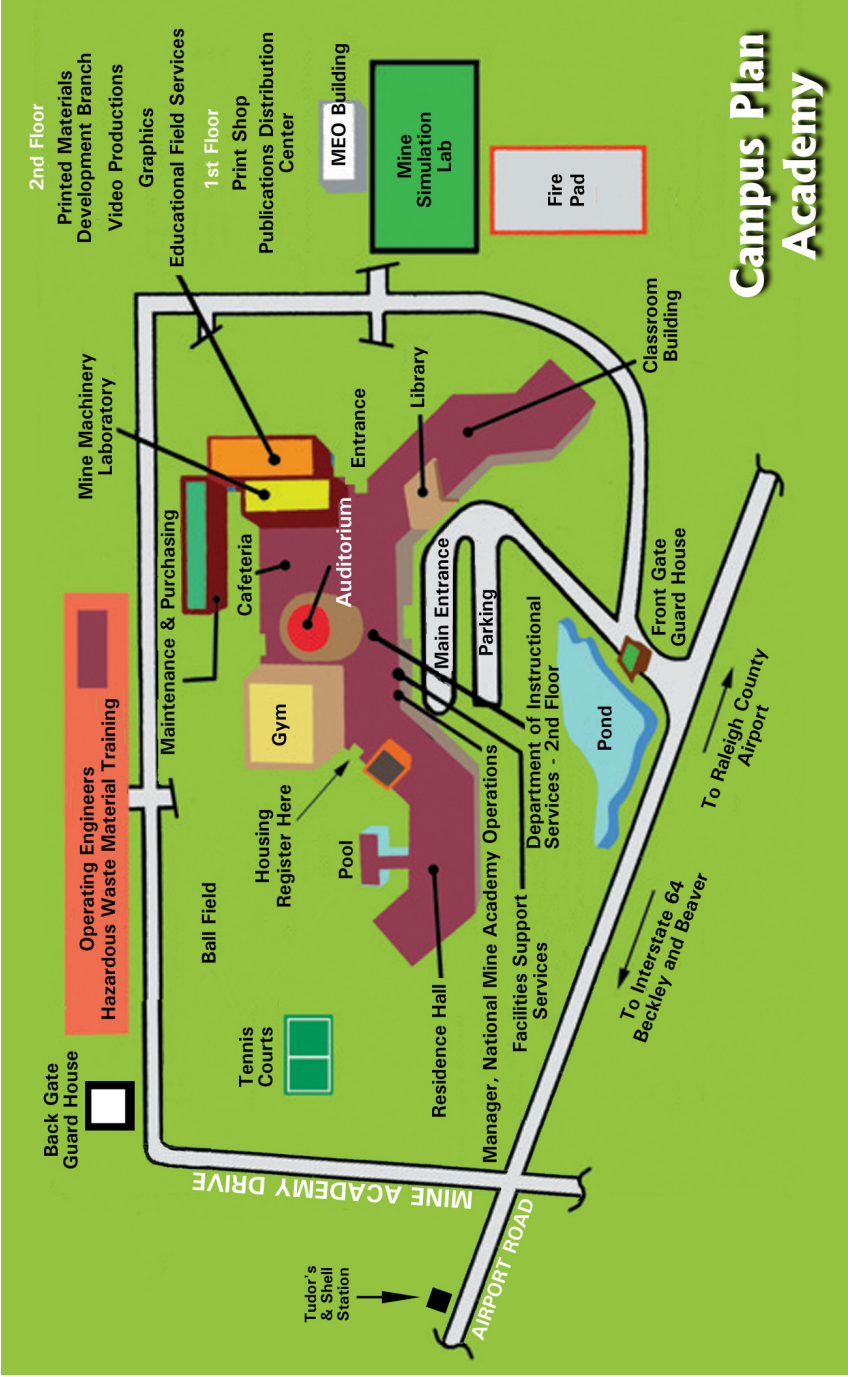
The **Maintenance and Equipment Building** is used to maintain Academy equipment.

The **Publications Distribution Center** houses the print shop, supply and warehouse facilities, and the Department of Instructional Materials.

The **Residence Hall** has 174 units. Each room in the residence hall has a queen-size bed, a private bath, television, telephone, desk, storage area, refrigerator, coffee pot, and iron and ironing board.

Security

Upon your arrival at the Academy you will need to stop at the main gate. Uniformed security personnel are on duty at all times. Personal photo identification must be presented at the entry gates, and be displayed and worn while at the Academy. Additionally, security guards will issue you a color coded parking permit. Display this card on your vehicle dashboard and park in the area designated on the permit.



Academic Programs

MSHA Training

All newly hired MSHA mine safety and health inspectors receive entry-level training. This training covers technical aspects of mine inspection and additional topics such as effective communications and professionalism.

Entry-level coal mine safety and health inspectors receive six modules of instruction (21 weeks total) at the Academy in conjunction with required web-based training and on-the-job training (OJT) sessions in the field.

Entry-level metal/nonmetal mine safety and health inspectors training includes six modules of instruction (23 weeks total) at the Academy with OJT sessions in the field.

Journeyman training presents up-to-date technical and regulatory information to journeyman mine safety and health inspectors to help them ensure that the mining community is served most effectively. The Academy also presents courses to provide journeymen with more in-depth training on special subjects.

Technical Specialists receive training in a variety of subjects so that they remain informed regarding current technical and regulatory information.

Administrative, clerical, and support personnel receive an annual one-week training program to enhance their ability to assist MSHA personnel and clients.

The Academy offers computer training on various software applications to MSHA personnel and others from the mining industry and other government agencies.

Training for Industry

All Academy courses are open to participants from throughout the mining community. These programs are taught by Academy and visiting outside instructors and specialists from the mining industry, trade associations, colleges and universities, manufacturers, and other government agencies. Seminars, workshops, and conferences are offered during the year, both at the Academy and at sites throughout the country.

Many courses provide certification or qualification to persons who take mandated examinations.

Examples of other courses available to the industry are Electrical Safety for Miners, Hoists and Elevators, Instructor Training Workshop (Part 48), Construction and Repairs Safety, Mine Elevator Inspection Program Training, Noise Hazards, Regulation and Control, and Surface Facilities and Coal Preparation. In addition, the Academy will frequently furnish additional courses to the industry and interested participants if valid requests are made.

Training activities in the Mine Simulation Laboratory cover mine rescue, firefighting, mine emergency response, simulated inspections, ventilation, roof control, haulage, annual refresher subjects, supervisory training, and mine examination. Students come from MSHA, other Federal and state agencies, industry, labor organizations, and international mining delegations.

Academic Life

Class Attendance

Classes are informal and while dress is casual, it should remain professional in nature. Most of our laboratory classes include hands-on activities or outside fieldwork.

A typical class day begins at 8:00 a.m. and ends at 4:00 p.m. All other day classes end by 5:00 p.m., unless otherwise scheduled.

Absences from class are approved for personal illnesses, emergencies, or death in a student's family. Students notify their supervisor and instructors, and make up work assigned while absent.

Grading System

The Academy uses a grading system for entry-level (coal and metal/nonmetal) courses of study and gives examinations in these classes. These grades are recorded, and students are informed of their progress through periodic grade reports.

Units of Credit/Certificates of Participation

Students receive Continuing Education Units (CEUs) upon completion of an Academy program. One CEU is 10 contact hours of participation in an educational experience. The Academy does not grant degrees, but CEUs may be converted into hours of credit at other institutions.

Students who satisfy the Academy criteria for successful completion of any course of study receive a Certificate of Completion documenting the course title, date, and CEUs.

College Credit for Academy Courses

Mine safety and health inspectors can earn an **Associate of Applied Science Degree in Occupational Development: Mine Inspection** from the Mountwest Community and Technical College, Huntington, West Virginia. This program is a cooperative

effort among MSHA, the National Council of Field Labor Locals, the U.S. Department of Labor's Bureau of Apprenticeship and Training, and the university. Marshall will award 43 credit hours to students who complete the equivalent of the mine inspector apprentice requirements. These credits are applied to successful completion of the classroom and on-the-job training parts of Entry Level Mine Inspector training. An additional 22 hours of general education credits are also required.

Academic Dishonesty

The student can be disciplined or dismissed from the Academy for cheating, dishonesty, plagiarism, or knowingly furnishing false information to the Academy.

Withdrawal

The student may withdraw from an Academy program without penalty because of injury or other extenuating circumstances. If you withdraw, you will not receive credit for the courses of study in which you were enrolled.

Transcripts

You may request (in writing) a copy of your academic record. Your request must include your full name and complete address. Submit your request to:

National Mine Health and Safety Academy
Student Services Branch
1301 Airport Road
Beaver, West Virginia 25813-9426
FAX: (304) 256-3251

Student Life

Food Service and Student Store

Academy food service offers complete meals in a cafeteria setting. You may choose from a selection of freshly prepared entrees and desserts with a full range of beverages available to complement your meal. There is also a made-to-order deli and a salad bar. Heart-healthy and vegetarian selections are also available. Food service personnel can assist anyone who has special dietary needs. If you are an MSHA employee, you will receive a meal card when you check in. Present this card to the cashier upon entering the cafeteria serving line. Non-MSHA students who are in residence must pay for lodging and meals.

The student store, located next to the cafeteria, has a wide variety of sundries, souvenirs, and gifts.

The food service and student store accept all major credit cards.

For Your Health and Safety

Please observe all posted speed limits and all traffic and parking signs.

If you need emergency medical attention, please dial ext. 555 or "0" and request medical assistance. Academy personnel will take you to a medical facility in an Academy vehicle or arrange for an ambulance. If there is no answer, dial 9-911 (Raleigh County Emergency Operations Center) and request medical assistance.

Assistance in completing accident health insurance claim forms for Federal students may be obtained from your class coordinator or a responsible staff person on duty after normal duty hours.

You play an important part in accident prevention at the Academy. Should you see an actual or potential safety hazard, please report it to an instructor, class coordinator, or any Academy staff person.

Pets of any kind are prohibited on all Academy grounds, except for certified service animals accompanying people with impairments.

Mail

You can send or receive mail (Monday through Friday) at the Residence Hall registration desk. Our mailing address is:

National Mine Health and Safety Academy
1301 Airport Road
Beaver, WV 25813-9426

Vehicles

Students are required to register vehicles with security personnel at the main entrance to Academy grounds. You will receive a color-coded parking permit that allows you to park in a designated area. There is ample, well-lighted, and secure parking at the Academy.

Fees And Billing

All Academy fees are reviewed periodically and subject to change.

Tuition

The Academy will charge tuition fees to all persons attending Academy courses, except employees of Federal, State, or local governments, persons attending the Academy under a program supported through an MSHA State grant, and persons performing a direct service.

The tuition amount indicated by the course announcement is due on arrival by check, money order, or credit card (VISA and MasterCard) payable to MSHA Finance. We regret that **we cannot accept cash**. Billing is possible with a written request to the Academy's Student Services Branch two weeks in advance. If tuition is submitted in advance, written notification of withdrawal to the Student Services Branch is required to process a full refund.

Lodging

All persons in residence at the Academy, except MSHA personnel, other persons performing a direct service for MSHA, and persons attending a program supported through an MSHA State Grant, are charged for lodging.

The lodging fee is \$44.00 per person per day for a single room and \$57.00 per day for two persons. Lodging fees are due on arrival by credit card (VISA and MasterCard) or check/money order payable to MSHA Finance. We regret that **we cannot accept cash**. Billing is possible with a written request to the Student Services Branch.

Persons staying at the Academy may have their spouses and immediate family as guests provided all appropriate fees are paid

on arrival. Advance reservations are required. Guests under 18 years of age must be accompanied by an adult at all times.

If you have special needs, please contact Student Services before your arrival.

Meals

Participants who pay for Academy lodging may register for meals when they check in. Students staying in the Residence Hall are normally required to purchase a meal ticket for breakfast and lunch at the Academy. Dinner is optional. Prices are:

Breakfast	\$ 9.35
Lunch	\$12.02
Dinner	\$13.36

Participants paying for their meals in the cafeteria may do so by cash, major credit card, or check/money order payable to Basic Contracting Services, Inc.

Travel to the Academy

Located on a plateau in southern West Virginia, the Academy blends into its Appalachian mountain setting. Scenic vistas and wildlife greet travelers to the Academy, and students experience a restful environment.

Several travel options are available:

By Air

Beckley, West Virginia – The Raleigh County Memorial Airport is located 1 mile from the Academy.

Charleston, West Virginia – The Yeager Airport is located 65 miles north of the Academy. Rental cars are available.

Lewisburg, West Virginia – The Greenbrier Valley Airport is located 47 miles east of the Academy. Rental cars, taxis, and limousines are available.

By Train

AMTRAK provides tri-weekly service to and from Prince, West Virginia – located 16 miles from the Academy. Taxi service meets all trains.

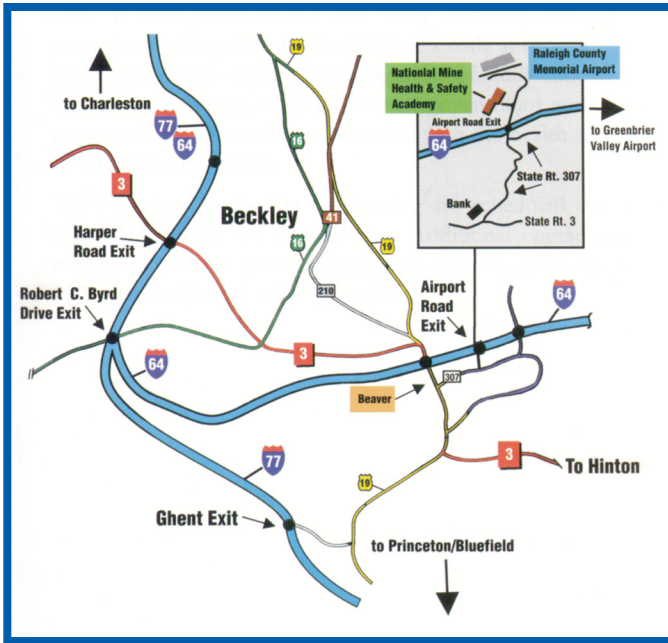
By Bus

Daily **Greyhound** service is available to and from Beckley – located 8 miles from the Academy in downtown Beckley. Taxi service is available.

By Car

See **Route Map** to the Academy on page 18.

Route Map to the Academy



Arriving from the NORTH

- » When using U.S. 19 South, go to and follow I-77 South, exit at I-64 East
- » Follow I-64 to EXIT 125B, Airport Road
- » Academy is 1 mile on left

Arriving from the SOUTH

- » When using I-77 North, exit and follow I-64 East
- » Use EXIT 125B, Airport Road
- » Academy is 1 mile on left

Arriving from the EAST

- » When using I-64 West, use Exit 125, Beaver/Airport Road
- » Turn RIGHT at bottom of ramp
- » Academy is 1 mile on left

Arriving from the WEST

- » When using I-64 East, use Exit 125B, Airport Road
- » Academy is 1 mile on left

Training Courses

The National Mine Health and Safety Academy develops and presents courses of study which cover a wide spectrum of mine health and safety subjects. These courses of study address training needs of miners, mine safety and health inspectors, government and industry personnel, and others concerned with the health and safety of our Nation's miners.

The courses described in this catalog are scheduled or can be scheduled during the coming year. Additional courses can be scheduled to meet specific needs of miners, mine operators, and mine health and safety specialists.

Please contact Student Services at (304) 256-3252 if you are interested in attending any course listed as "Scheduled Upon Request." A list of students requesting the course will be maintained by that office until a sufficient interest is received. All students will then be notified and a date will be established to hold the training.

Metal/Nonmetal Inspection Courses

Journeyman Training

All metal and nonmetal mine safety and health inspectors will attend one week of training per year, or two weeks every other year. The training will be in a seminar format with subjects in various specialty areas. A list of dates and subjects is on page 37.

The additional courses described in this section are designed for journeyman metal and nonmetal mine safety and health inspectors and Federal, state, mining industry, and labor organization personnel.

Course dates are given at the bottom of the course description.

Scheduling
at Worksite
Available
Upon Request

Courses marked by this icon may be held at your worksite. If your company or organization would like any of these courses presented onsite, contact Cheryl Stevens at (304) 256-3236. The course will then be scheduled.

QUESTIONS?

If you need more information about contents of a course, contact the technical coordinator for that course at (304) 256-3100 or Cheryl Stevens at (304) 256-3236.

To Enroll Contact:

National Mine Health and Safety Academy
Student Services Branch
1301 Airport Road
Beaver, West Virginia 25813-9426

TELEPHONE: (304) 256-3252
FAX: (304) 256-3251

BLASTING (SURFACE) (MNM) [EX316M]

Scheduling
at Worksite
Available
Upon Request

This course discusses the characteristics and use of explosives and blasting agents. It is designed to teach blasting standards in accordance with Institute Makers of Explosives (IME) guidelines and the Code of Federal Regulations (30 CFR). The course is structured for MSHA metal/nonmetal safety and health inspectors and industry personnel.

Contents:

- ◆ Definitions
- ◆ Transportation and Storage of Explosives and Blasting Agents
- ◆ Detonation Units
- ◆ Misfires
- ◆ Electric and Nonelectric Blasting Operations
- ◆ Explosives Hazards and Accidents
- ◆ Safe Blasting Principles (Work Procedures and Blast Plans)
- ◆ Initiation Systems

Technical Coordinator: Douglas Lawson
Course Length: 3 days
Tuition: \$252.00
Dates: *Offered at worksite only*

ELECTRICAL HAZARDS

[EL301M]

Scheduling
at Worksite
Available
Upon Request

This course is designed to provide practical methods and techniques for the identification of electrical hazards and the appropriate enforcement actions to be taken. This course is for MSHA metal/nonmetal inspection personnel with little or no electrical expertise.

Contents:

- ◆ Basic Electrical Theory
- ◆ Basic Circuitry
- ◆ Grounding
- ◆ Power Distribution Systems
- ◆ Inspection of Electrical Equipment
- ◆ Regulations and Policies
- ◆ Hazard Recognition
- ◆ Citations and Orders
- ◆ Personal Safety

NOTE: *This course is not for Electrical Specialists.*

Technical Coordinators: Roy Milam
Art Wooten

Course Length: 3 days

Tuition: \$252.00

Dates: *Scheduled upon request*

FIRST RESPONDER WORKSHOP

[GS645G]

Scheduling
at Worksite
Available
Upon Request

This is a one-day workshop designed to provide MSHA personnel, the mining industry, miner’s representatives, firefighters, law enforcement personnel and emergency medical personnel with information and precautions that should be taken before or while responding to an emergency at surface mines, surface areas of underground mines, and surface mining facilities.

Contents:

- ◆ Emergency response planning
- ◆ Large haul truck fires
- ◆ Structures in and around surface facilities
- ◆ Use of mine equipment for rescue & fire fighting
- ◆ Traffic control on mine roadways
- ◆ First responder vehicle maintenance (Brakes & Steering)

Hazards addressed:

- ◆ Explosives storage
- ◆ Surge piles
- ◆ Draw-off tunnels
- ◆ Fuel storage (stationery and mobile)
- ◆ Belt conveyors
- ◆ Electricity
- ◆ Preparation plants and mills
- ◆ Off road haul trucks and end loaders
- ◆ Highwalls and highwall mining machines
- ◆ Chemicals and gases common to mines and facilities
- ◆ Surface areas of underground mines

Technical Coordinators: Johnnie Tyler
Charlotte Richardson

Course Length: 1 day

Tuition: None

Date: *Scheduled upon request*

GROUND CONTROL HAZARDS

[RC301M]

Scheduling
at Worksite
Available
Upon Request

This course will focus on the Code of Federal Regulations (30 CFR) requirements related to ground control at surface and underground metal and nonmetal mines. The course provides techniques for the recognition and correction of ground control hazards.

Contents:

- ◆ Highwalls
- ◆ Stockpiles
- ◆ Basic Geology
- ◆ Rock Fixtures
- ◆ Surface Structures
- ◆ Underground Support
- ◆ Hazard Recognition
- ◆ Compliance Determination

Technical Coordinators: Tom Bonifacio
Johnnie Tyler

Course Length: 3 days

Tuition: \$252.00

Dates: *Scheduled upon request*

HAULAGE (SURFACE) (MNM)

[HL301M]

Scheduling
at Worksite
Available
Upon Request

Haulage accidents have been one of the leading causes of fatal accidents for several years at our Nation’s surface mines. This course teaches how to recognize the hazards that may exist in surface haulage.

Contents:

- ◆ Compliance Determination of 30 CFR Parts 56/57.9000 and 56/57.14000
- ◆ Inspection Procedures for Surface Mining Equipment
- ◆ Use of Signs and Traffic Control on Mine Property
- ◆ Haul Road Design
- ◆ Brake Systems
- ◆ New Technology (video cameras)
- ◆ Rollover Protective Structures (ROPS)
- ◆ Falling Object Protective Structures (FOPS)
- ◆ Tire and Rim Safety
- ◆ Overview of Fatal Accidents

Technical Coordinators: Tom Bonifacio
Johnnie Tyler

Course Length: 3 days

Tuition: \$252.00

Dates: *Scheduled upon request*

INSPECTOR'S PORTABLE APPLICATIONS FOR LAPTOPS (IPAL) REVIEW – METAL/ NONMETAL

[CT307M]

Scheduling
at Worksite
Available
Upon Request

The IPAL review course is designed for MSHA metal/ nonmetal mine safety and health inspectors. The course reviews the latest version of the IPAL Program. The course also covers the fundamentals of the computer operating system, troubleshooting, and how to use the computer to reference resource material stored in the computer.

Contents:

- ◆ IPAL (Inspector's Portable Applications for Laptops)
- ◆ Reference Material (30 CFR, Mine Act, PPM, Policy Information Letters, and Program Information Bulletins)
- ◆ Basic Troubleshooting and Maintenance of the Laptop Computer and the IPAL Program
- ◆ Using Citrix Metaframe

Technical Coordinators: Mac Carnes
Kevin Malay

Course Length: 2 days

Tuition: None

Dates: *Scheduled upon request*

MARSHALL UNIVERSITY MASTERS OF SAFETY DEGREE (MINING EMPHASIS)

[NEMU003]

Courses will be offered pursuant to the Masters of Safety Degree (Mining Emphasis) program offered by the Academy through Marshall University. Courses will be offered in a blended learning environment using distance learning technology. Online courses are also planned to be offered in the Spring, Summer, and Fall 2011 semesters. Marshall University offers courses online through WebCT Vista. This is available to any person enrolled as a Marshall University graduate student. It is extremely important that you be accepted into the program by Marshall University so that any computer issues that may arise can be resolved prior to beginning the course.

Students must be admitted into the program **prior** to course enrollment. Application for Graduate Admission forms may be obtained by calling Cheryl Stevens at (304) 256-3236 or by going online to www.marshall.edu. College Chemistry 203, Math 130 (college algebra), and Physics 101 or the equivalent are prerequisites for admission to this program, as is a minimum undergraduate GPA of 2.5 or being registered as a professional engineer, or scoring at the mean or above on one area of the General GRE.

Enrollment for these online classes will be limited to 25 students and is on a first come first serve basis. First priority will be given to students who have taken courses previously in pursuit of this degree; those persons successfully admitted into the program through Marshall University will be given next preference.

Tuition and other related fees will be determined and posted at a later date. For more information, contact John Rosiek by email at rosiek.john@dol.gov or at (304) 256-3211.

Technical Coordinator: John Rosiek
Dates: Spring 2011
Summer 2011
Fall 2011

MINE ACCIDENT INVESTIGATION AND REPORT WRITING [IV301G]

This course is for coal, metal/nonmetal, technical support, EPD, and other MSHA individuals involved in accident investigation. **Other interested individuals should contact the Technical Coordinator.** The course reviews basic guidelines, procedures, and techniques used to investigate and report on accidents and other incidents involving health and safety in the mining industry.

Classroom activities and discussions cover reasons for accident investigations, the investigative process, data collection, accident reconstruction, proper analysis for corrective actions, and completion of investigative reports following relevant MSHA guidelines and policies. At the conclusion of the class, in a practical exercise, students will conduct a simulated accident investigation and prepare a report. **Students should bring their laptop computers.**

Contents:

- ◆ Overview of Accident Investigation
- ◆ Pre-Investigation Activities
- ◆ Dealing with Family Members
- ◆ Accident Reconstruction
- ◆ Photography/Sketching
- ◆ Interviewing Techniques
- ◆ Data Collection and Evaluation
- ◆ Developing Conclusions and Corrective Actions
- ◆ Report Writing
- ◆ TapRoot®

Technical Coordinator: David Elkins

Course Length: 8 days

Tuition: None

Dates: October 26 - November 4, 2010

March 15-24, 2011

May 3-12, 2011

August 16-25, 2011

**MINE ELEVATOR INSPECTION
PROGRAM TRAINING – MODULE I**
[HS606G]

Scheduling
at Worksite
Available
Upon Request

This training module covers the inspection of mine elevators and the impact of the mine environment on critical elevator components. It will enable the student to perform basic mine elevator inspections, focusing on critical safety concerns, including those identified in recent mine elevator accidents. The material will be correlated to the applicable sections of ASME A17. Many visuals and actual elevator hardware will be used throughout the program.

This module is a stand-alone program for elevators used in harsh environments. It also can be used as the first in a series of modules designed to prepare the student for taking the Qualified Elevator Inspector (QEI) certification examination.

NOTE: Students should bring the latest version of elevator codes ASME A17.1 & A17.2.1 with them, although they are not mandatory.

**Technical Coordinator: Roy Milam
Art Wooten**
Course Length: 2 days
Tuition: \$168.00
**Dates: June 14-15, 2011
August 16-17, 2011**

**TAILINGS DAM AND WASTE PILE
INSPECTION – METAL/NONMETAL**
[IM301M]

Scheduling
at Worksite
Available
Upon Request

This course will introduce the student to the general safety considerations for the design, construction, maintenance, and inspection of dams and waste piles.

Contents:

- ◆ Typical Geotechnical Investigations
- ◆ Foundation Analysis
- ◆ Breakthrough Potential Analysis
- ◆ Stability Analysis and Safety Factors
- ◆ Hydrologic and Hydraulic Considerations
- ◆ Construction Monitoring
- ◆ Identification of Deficiencies
- ◆ General Methods of Remediation
- ◆ Applicable Regulations

Technical Coordinator: Clifford F. Lindsay
Course Length: 3 days
Tuition: \$252.00
Dates: *Scheduled upon request*

UNDERGROUND VENTILATION FOR METAL AND NONMETAL MINES

[VN303N]

Scheduling
at Worksite
Available
Upon Request

This course is designed to assist metal/nonmetal miners in the recognition and evaluation of health hazards and effective ventilation methods to eliminate these hazards.

Contents:

- ◆ Airborne Contaminants
- ◆ Sampling and Detecting Devices
- ◆ Confined Spaces
- ◆ Hazard Controls
- ◆ Mine Maps
- ◆ Recognition of Areas That May Have Poor Air Quality
- ◆ Measuring Air Quantities
- ◆ Review of Ventilation Regulations

Technical Coordinators: William D. McKinney
Scott Mandeville

Course Length: 2 days

Tuition: \$168.00

Dates: *Scheduled upon request*

Metal/Nonmetal Mine Safety and Health Inspectors Retraining [LP311M]

Metal and nonmetal mine safety and health inspectors are required to receive a minimum of two weeks of training every two years. This is the first year of the current two-year training cycle for metal/nonmetal mine safety and health inspectors.

Listed below are the dates and subjects of the training sessions scheduled at the Academy.

Tom Bonifacio, Coordinator Schedule

November 30 - December 9, 2010
March 15 - 24, 2011
May 3 - 12, 2011
June 21 - 30, 2011

Subjects

- ◆ Coal Firing Safety
- ◆ Documentation of Violations, Photographs, Inspections, and Investigations
- ◆ Evaluating Flagrant and Repeat Violations
- ◆ Hazardous Complaint Conditions/MSIS/Mine Profile/IPAL
- ◆ Impoundment Inspections
- ◆ Inspection Procedures
- ◆ Internal Review Summaries
- ◆ Laboratory Inspections
- ◆ Professionalism Review
- ◆ Preparing for Litigation & Testifying
- ◆ Radon Daughter Sampling, Asbestos/Fiber Sampling and Material Recognition
- ◆ Draeger Tubes, Respirable and Total Dust Sampling
- ◆ Review of Part 46/48 Requirements

Metal/Nonmetal Entry Level Mine Safety and Health Inspectors Training

The courses listed in this section are designed for entry level mine safety and health inspectors. However, they may be attended by other Federal, state, mining industry, and labor organization personnel.

Training dates are given with each module.

Need More Info? Contact:

Cheryl Stevens
Department of Instructional Services
National Mine Health and Safety Academy
1301 Airport Road
Beaver, West Virginia 25813-9426
TELEPHONE: (304) 256-3236
FAX: (304) 256-3247
E-MAIL: stevens.cheryl@dol.gov

Metal/Nonmetal Curriculum (Modules I-VI)

The following chart shows the required core courses for entry level mine safety and health inspectors.

Wellness training is scheduled for each module.
Laptop computer and printer required for all modules.

MODULE I (4 WEEKS)

Orientation	Law, Regulation and Policy	Safety Programs
Introduction to MSHA and Mission	Introduction to Laptops	Employee Accident Reporting
Diversity	Effective Writing	Drug and Substance Abuse Awareness
Root Causes	Safety Talks I and II	Employee Health and Safety Training Requirements
Standards of Conduct	Part 45 - Contractors	Parts 48 and 46
Professionalism	Mine Act - Purpose of Agency	
Communications		

MODULE II (4 WEEKS)

Inspector's Portable Applications for Laptops (IPAL)	Notetaking	Citations and Orders Writing
Mine Act - S & S	General Inspection Procedures	Interviewing Techniques
		Electricity

MODULE III (4 WEEKS)

Fire Protection	Ground Control I (Surface)	Personal Protective Equipment
Simulated Inspection	Structural Safety	Surface Haulage I
Reporting Requirements - Part 50	Health I (with Chemical Hazards and HazCom)	
Technical Support Briefing	Mine Act - 104(d)	

MODULE IV (4 WEEKS)

Drilling and Blasting	Material Storage and Handling	Introduction to Special Investigations
IPAL Review	Conference Presentation	Mine Emergency/Mine Rescue/Part 49
Mine Act - 107(a), 103(g)	Preparation (PP)	Articulating Trucks
Hoisting	Gas Detecting Devices	
Permissibility		

MODULE V (4 WEEKS)

Health II	Underground Ventilation	Industrial Ventilation
Mine Act - 105(c), 110(c), 104(g)(1)	Haulage II/Cranes	Retaining Dams
Cement Plant Processes	Excavation/Trenching Safety	Part 50/Audits
Pressure Vessels & Boilers		Scaffolding Safety

MODULE VI (3 WEEKS)

Unique Processes	Courtroom Procedures	Ground Control II (UG)
Accident Investigation	Mine Act - 103(f), 103(k)/General Review	Maintenance & Repair/Construction Safety
Slope and Shaft Sinking Inspection	Jurisdictional Issues	Overall Review
Electrical Review	Graduation	

Metal/Nonmetal Entry Level Mine Safety and Health Inspectors Training

(Dates include travel days)

GROUP M19

Module VI	January 24 – February 16, 2011	(4 weeks)
-----------	--------------------------------	-----------

GROUP M20

Module III	January 24 – February 18, 2011	(4 weeks)
Module IV	May 2 – 27, 2011	(4 weeks)
Module V	July 11 – August 5, 2011	(4 weeks)
Module VI	September 12 - 30, 2011	(3 weeks)

GROUP M21

Module I	September 13 – October 8, 2010	(4 weeks)
Module II	January 24 – February 18, 2011	(4 weeks)
Module III	April 25 – May 19, 2011	(4 weeks)
Module IV	July 11 – August 5, 2011	(4 weeks)
Module V	September 12 – 30, 2011	(3 weeks)
Module VI	November 28 – December 16, 2011	(3 weeks)

Coal Inspection Courses Journeyman Training

All journeyman coal mine safety and health inspectors will attend one week of training per year, or two weeks every other year. The training will be in a seminar format with subjects in various specialty areas. A list of dates and subjects can be found on pages 65 and 66.

The additional courses described in this section are designed for journeyman coal mine safety and health inspectors and other Federal, state, mining industry, and labor organization personnel.

Course dates are given at the bottom of the course description.

Scheduling
at Worksite
Available
Upon Request

Courses marked by this icon may be held at your worksite. If your company or organization would like any of these courses presented onsite, contact Cheryl Stevens at (304) 256-3236. The course can then be scheduled.

QUESTIONS?

If you need more information about contents of a course, contact the technical coordinator for that course at (304) 256-3100 or Cheryl Stevens at (304) 256-3236.

To Enroll Contact:

National Mine Health and Safety Academy
Student Services Branch
1301 Airport Road
Beaver, West Virginia 25813-9426

TELEPHONE: (304) 256-3252
FAX: (304) 256-3251

BLASTING (SURFACE) (COAL)

[EX316C]

Scheduling
at Worksite
Available
Upon Request

This course discusses the characteristics and use of explosives and blasting agents. It is designed to teach blasting standards in accordance with Institute Makers of Explosives (IME) guidelines and the Code of Federal Regulations (30 CFR). The course is structured for MSHA coal mine safety and health inspectors and industry personnel.

Contents:

- ◆ Definitions
- ◆ Transportation and Storage of Explosives and Blasting Agents
- ◆ Detonation Units
- ◆ Misfires
- ◆ Electric and Nonelectric Blasting Operations
- ◆ Explosives Hazards and Accidents
- ◆ Safe Blasting Principles (Work Procedures and Blast Plans)
- ◆ Initiation Systems

Technical Coordinator: Douglas Lawson
Course Length: 3 days
Tuition: \$252.00
Dates: *Scheduled upon request*

ELECTRICAL SAFETY FOR COAL MINERS

[EL601C]

Scheduling
at Worksite
Available
Upon Request

This course is designed to provide practical methods and techniques to identify electrical hazards and the appropriate enforcement actions to be taken. This course is for coal inspection personnel with limited or no electrical expertise.

Contents:

- ◆ Basic Electrical Theory
- ◆ Basic Circuitry
- ◆ Hazard Recognition
- ◆ Grounding
- ◆ Power Distribution Systems
- ◆ Regulations and Policies
- ◆ Personal Safety
- ◆ Citations and Orders
- ◆ Inspection of Electrical Equipment
- ◆ Permissibility

NOTE: This course is not intended for Electrical Specialists.

**Technical Coordinators: Roy Milam
Art Wooten**

Course Length: 3 days

Tuition: \$252.00

Dates: *Scheduled upon request*

FIRST RESPONDER WORKSHOP

[GS645G]

Scheduling
at Worksite
Available
Upon Request

This is a one-day workshop designed to provide MSHA personnel, the mining industry, miner's representatives, firefighters, law enforcement personnel and emergency medical personnel with information and precautions that should be taken before or while responding to an emergency at surface mines, surface areas of underground mines, and surface mining facilities.

Contents:

- ◆ Emergency response planning
- ◆ Large haul truck fires
- ◆ Structures in and around surface facilities
- ◆ Use of mine equipment for rescue & fire fighting
- ◆ Traffic control on mine roadways
- ◆ First responder vehicle maintenance (Brakes & Steering)

Hazards addressed:

- ◆ Explosives storage
- ◆ Surge piles
- ◆ Draw-off tunnels
- ◆ Fuel storage (stationery and mobile)
- ◆ Belt conveyors
- ◆ Electricity
- ◆ Preparation plants and mills
- ◆ Off road haul trucks and end loaders
- ◆ Highwalls and highwall mining machines
- ◆ Chemicals and gases common to mines and facilities
- ◆ Surface areas of underground mines

Technical Coordinators: Johnnie Tyler
Charlotte Richardson

Course Length: 1 day

Tuition: None

Date: *Scheduled upon request*

HAULAGE (SURFACE) (COAL) [HL301C]

Scheduling
at Worksite
Available
Upon Request

Haulage accidents have been one of the highest categories of fatal accidents for several years at our Nation's surface mines. This course teaches the recognition of hazards that may exist in surface haulage.

Contents:

- ◆ Compliance Determination of 30 CFR Parts 77.400 and 77.1600
- ◆ Inspection Procedures for Surface Mining Equipment
- ◆ Use of Signs and Traffic Control on Mine Property
- ◆ Haul Road Design
- ◆ Brake Systems
- ◆ New Technology (video cameras)
- ◆ Rollover Protective Structures (ROPS)
- ◆ Falling Object Protective Structures (FOPS)
- ◆ Tire and Rim Safety
- ◆ Overview of Fatal Accidents

Technical Coordinators: Johnnie Tyler
Roger Montali

Course Length: 3 days

Tuition: \$252.00

Dates: *Scheduled upon request*

INDUSTRIAL HYGIENE

[IH315C]

Scheduling
at Worksite
Available
Upon Request

This course will enable mine safety and health inspectors to recognize and effectively assess health hazards, other than dust and noise, in coal mines and related areas. Laboratory exercises will include sampling procedures and techniques for more common health hazards that may be encountered during inspections. Other health hazard sampling procedures and techniques as well as health effects – respiratory, dermatological, carcinogenic – will be discussed.

Contents:

- ◆ Industrial Hygiene Terminology
- ◆ Toxicology
- ◆ Solvents
- ◆ Asbestos
- ◆ Radiation (Gamma, Ultraviolet)
- ◆ Sampling Methods
- ◆ Methods of Control
- ◆ Contaminants Detected at Mine Sites

Technical Coordinator: William D. McKinney
Course Length: 3 days
Tuition: \$252.00
Dates: *Scheduled upon request*

INSPECTOR'S PORTABLE APPLICATIONS FOR LAPTOPS (IPAL) REVIEW – COAL [CT307C]

Scheduling
at Worksite
Available
Upon Request

The IPAL review course is designed for MSHA coal mine safety and health inspectors. The course reviews the latest version of the IPAL Program. The course also covers the fundamentals of the computer operating system, troubleshooting, and how to use the computer to reference resource material stored in the computer.

Contents:

- ◆ IPAL (Inspector's Portable Applications for Laptops)
- ◆ Reference Material (30 CFR, Mine Act, PPM, Policy Information Letters, and Program Information Bulletins)
- ◆ Basic Troubleshooting and Maintenance of the Laptop Computer and the IPAL Program
- ◆ Using Citrix Metaframe

Technical Coordinators: Mac Carnes
Kevin Malay

Course Length: 2 days

Tuition: None

Dates: *Scheduled upon request*

LONGWALL MINING AND INSPECTION PROCEDURES

[MS302C]

Scheduling
at Worksite
Available
Upon Request

This course will introduce the student to longwall mining. It will also make the experienced coal mine inspectors more familiar with the trends and new technology in longwall mining. It will cover all aspects of longwall mining, including approved MSHA plans.

The first part of the course will cover all aspects of mining, including a review of all basic components of longwall mining systems and their functions. It will also cover longwall moves, degasification, and ground control for longwall faces.

The second part of the course will stress inspection procedures. It will cover all areas – from outby to the longwall face. This section has accompanying text and relates inspection procedures to the applicable standards in 30 CFR Parts 75 and 18.

Contents:

- ◆ History and Trends
- ◆ Parts of a Longwall (shearer, plow, panline, stage loader, drives, etc.)
- ◆ Shields (parts and controls)
- ◆ Strata Control (above the longwall)
- ◆ Hydraulics
- ◆ Longwall Moves
- ◆ Special Roof Control Products for Longwalls
- ◆ Ventilation (section, gob, bleeder, bleeder fans)
- ◆ Basic Longwall Electrical Systems
- ◆ CO Monitors
- ◆ Degasification
- ◆ Respirable Dust Control
- ◆ Inspection Procedures (Special Emphasis)
- ◆ Regulations

Technical Coordinator: Joseph Fama

Course Length: 3 days

Tuition: \$252.00

Dates: *Scheduled upon request*

MARSHALL UNIVERSITY MASTERS OF SAFETY DEGREE (MINING EMPHASIS)

[NEMU003]

Courses will be offered pursuant to the Masters of Safety Degree (Mining Emphasis) program offered by the Academy through Marshall University. Courses will be offered in a blended learning environment using distance learning technology. Online courses are also planned to be offered in the Spring, Summer, and Fall 2011 semesters. Marshall University offers courses online through WebCT Vista. This is available to any person enrolled as a Marshall University graduate student. It is extremely important that you be accepted into the program by Marshall University so that any computer issues that may arise can be resolved prior to beginning the course.

Students must be admitted into the program prior to course enrollment. Application for Graduate Admission forms may be obtained by calling Cheryl Stevens at (304) 256-3236 or by going online to www.marshall.edu. College Chemistry 203, Math 130 (college algebra), and Physics 101 or the equivalent are prerequisites for admission to this program, as is a minimum undergraduate GPA of 2.5 or being registered as a professional engineer, or scoring at the mean or above on one area of the General GRE.

Enrollment for these online classes will be limited to 25 students and is on a first come first serve basis. First priority will be given to students who have taken courses previously in pursuit of this degree; those persons successfully admitted into the program through Marshall University will be given next preference.

Tuition and other related fees will be determined and posted at a later date. For more information, contact John Rosiek by email at rosiek.john@dol.gov or at (304) 256-3211.

Technical Coordinator: John Rosiek
Dates: Spring 2011
Summer 2011
Fall 2011

MINE ACCIDENT INVESTIGATION AND REPORT WRITING

[IV301G]

This course is for coal, metal/nonmetal, technical support, EPD, and other MSHA individuals involved in accident investigation. **Other interested individuals should contact the Technical Coordinator.** The course reviews basic guidelines, procedures, and techniques used to investigate and report on accidents and other incidents involving health and safety in the mining industry.

Classroom activities and discussions cover reasons for accident investigations, the investigative process, data collection, accident reconstruction, proper analysis for corrective actions, and completion of investigative reports following relevant MSHA guidelines and policies. At the conclusion of the class, in a practical exercise, students will conduct a simulated accident investigation and prepare a report. **Students should bring their laptop computers.**

Contents:

- ◆ Overview of Accident Investigation
- ◆ Pre-Investigation Activities
- ◆ Dealing with Family Members
- ◆ Accident Reconstruction
- ◆ Photography/Sketching
- ◆ Interviewing Techniques
- ◆ Data Collection and Evaluation
- ◆ Developing Conclusions and Corrective Actions
- ◆ Report Writing
- ◆ TapRoot®

Technical Coordinator: David Elkins

Course Length: 8 days

Tuition: None

Dates: October 26 - November 4, 2010

March 15 - 24, 2011

May 3 - 12, 2011

August 16 - 25, 2011

MINE ELEVATOR INSPECTION PROGRAM TRAINING – MODULE I [HS606G]

Scheduling
at Worksite
Available
Upon Request

This training module covers the inspection of mine elevators and the impact of the mine environment on critical elevator components. It will enable the student to perform basic mine elevator inspections, focusing on critical safety concerns, including those identified in recent mine elevator accidents. The material will be correlated to the applicable sections of ASME A17. Many visuals and actual elevator hardware will be used throughout the program.

This module is a stand-alone program for elevators used in harsh environments. It also can be used as the first in a series of modules designed to prepare the student for taking the Qualified Elevator Inspector (QEI) certification examination.

NOTE: Students should bring the latest version of elevator codes ASME A17.1 & A17.2.1 with them, although they are not mandatory.

Technical Coordinators: Roy Milam
Art Wooten
Course Length: 2 days
Tuition: \$168.00
Dates: June 14 - 15, 2011
August 16 - 17, 2011

NOISE HAZARDS, REGULATION, AND CONTROL

[IH321G]

Scheduling
at Worksite
Available
Upon Request

This course provides the participant with information on the hazards associated with overexposure to noise. It thoroughly reviews 30 CFR Part 62 and appropriate monitoring and control methods. The course also discusses the elements of an effective hearing conservation program.

Contents:

- ◆ Characteristics of Noise
- ◆ Impact of Noise on Health
- ◆ Noise Monitoring
 - > Sound Level Meters
 - > Dosimeters
 - > Octave Band Analysis
- ◆ Audiometric Examinations
- ◆ Noise Regulation - Compliance Discussion
 - > Exposure levels
 - > Monitoring
 - > Hearing Conservation Programs
 - > Training Requirements
- ◆ Control methods

Technical Coordinators: William D. McKinney
Robert Cline

Course Length: 3 days

Tuition: \$252.00

Dates: *Scheduled upon request*

ROOF CONTROL SEMINAR

[RC501C]

This seminar is designed for miners, company managers, engineers, trainers, roof bolter machine operators, and for any individual involved with coal mine roof safety. Federal and state enforcement personnel desiring to increase their knowledge in the latest developments in roof and rib control will also find this seminar very beneficial.

This seminar will update personnel on new products and methods related to roof stability. It will also include presentations by personnel from the Academy, Technical Support, MSHA headquarters, other government agencies, and industry. All subjects will incorporate safe mining practices which will help reduce roof fall injuries and fatalities. The seminar will discuss new roof control techniques, trends, and developments.

Contents:

- ◆ New Roof Bolting Products
- ◆ Supplemental Supports
- ◆ Roof Control Fatality Trends and Prevention
- ◆ Roof Control Machinery Updates

**Technical Coordinators: Joseph Fama
Jon Braenovich**

Course Length: 1 day

Tuition: None

Dates: June 1, 2011

SLOPE AND SHAFT SINKING SAFETY

[RC310G]

This course will include a description of the most common conventional slope and shaft construction process, the hazards associated with slope and shaft work, and inspection procedures. It will also discuss the hazards associated with hoisting and cover the inspection procedures for wire ropes.

Contents:

- ◆ Slope and Shaft Construction Process
- ◆ Ventilation
- ◆ Ground Control
- ◆ Hoisting
- ◆ Electrical
- ◆ Health
- ◆ Slope and Shaft Sinking Plans
- ◆ Inspection Guidelines
- ◆ Hazard Identification

Technical Coordinators: Tom Bonifacio
William Williams

Course Length: 2 days

Tuition: \$168.00

Dates: *Scheduled upon request*

SURFACE FACILITIES AND COAL PREPARATION

[PP601C]

This course is designed to familiarize the student with equipment and processes used in coal preparation plants; hazards that might exist around preparation plants; and inspection requirements for such plants. This course has been expanded to include structural safety in an effort to eliminate surface structural failures in the mining industry.

Contents:

- ◆ Structural Safety
- ◆ Equipment Guarding
- ◆ Stockpile Safety
- ◆ Delivery Methods to the Plant
- ◆ Crushing, Sizing, and Washing Processes
- ◆ Dewatering and Drying
- ◆ Storage of Raw and Clean Coal
- ◆ Potential Hazards
- ◆ Preparation Plant Inspection

Technical Coordinators: Clifford F. Lindsay
Johnnie Tyler

Course Length: 3 days

Tuition: \$252.00

Dates: *Scheduled upon request*

TRAINING FOR NEW ELECTRICAL SPECIALISTS

(EL402G)

This course is for new electrical specialists (less than 5 years with Agency). While conducting many of the procedures and tests required to ensure that electrical equipment and circuitry is safe for the miner, the specialist is exposed to potentially hazardous conditions many times a day. This advanced training is required to perform these tasks safely, and has proficiency testing for each topic covered.

Contents:

- ◆ Permissibility
- ◆ Diesel
- ◆ Substation Testing
- ◆ Grounding
- ◆ Low and Medium Voltage Testing
- ◆ Methane Monitors
- ◆ PPE and Meter Safety
- ◆ Regulation and Policy
- ◆ Hazardous Locations (NEC)
- ◆ Outby Circuits

**Technical Coordinators: Roy Milam
Art Wooten**

Course Length: 8 days

**Dates: March 29 - April 7, 2011
August 2 - 11, 2011**

UNDERGROUND DIESEL EQUIPMENT/VENTILATION

[VN321G]

This course provides the participants with techniques to conduct an evaluation of existing underground diesel mining equipment. Basic air sampling principles will be presented. The impact of diesel equipment on the mine ventilation system and the mine ventilation plan will be discussed. The health hazards associated with diesel equipment and diesel fuel will be examined.

Primary emphasis will focus on the Code of Federal Regulations (30 CFR) related to underground mining operations. The class will integrate technology with case studies and basic laboratory work.

Contents:

- ◆ Code of Federal Regulations Review
- ◆ Air Sampling Procedures
- ◆ Introduction to Basic Air Flow Measurement Techniques
- ◆ Equipment
- ◆ Health Hazards
- ◆ Proper Health Sampling Techniques
- ◆ Review of Diesel Technology

Technical Coordinators: William D. McKinney
Scott Mandeville

Course Length: 3 days

Tuition: \$252.00

Dates: *Scheduled upon request*

UNDERGROUND HAULAGE, TRANSPORTATION, AND MACHINERY (COAL)

[HL321C]

Scheduling
at Worksite
Available
Upon Request

Haulage or machinery-related accidents continue to be one of the leading causes of fatalities in underground mining. These two categories are also the leading causes of nonfatal accidents in underground mining which result in lost work days.

This course for MSHA Coal Journeyman inspectors teaches recognition of some of the hazards associated with haulage equipment and other machinery found in underground coal mines and methods to eliminate them. The inspector will recognize haulage hazards and the appropriate enforcement action to take.

Contents:

- ◆ Recent Statistical Data
- ◆ Investigative Findings of Some Recent Accidents
- ◆ Difference Between Accidents Classified as Haulage and Those Classified as Machinery
- ◆ Regulations and Policy
- ◆ Safeguards
- ◆ Enforcement Action: Citations and Orders

Technical Coordinators: Roy Milam
Art Wooten

Course Length: 2 days

Tuition: \$168.00

Dates: *Scheduled upon request*

Coal Mine Safety and Health Inspectors Retraining [LP311C]

MSHA underground and surface coal mine safety and health inspectors are required to receive a minimum of two weeks of training every two years. This is the first year of the current two-year training cycle for journeyman coal mine safety and health inspectors.

Listed below are the dates of the training sessions scheduled at the Academy.

Underground Coal Mine Safety and Health Inspectors (LP311C)

Richard McDorman, Coordinator

Schedule

October 19 - 28, 2010
January 25 - February 3, 2011
April 12 - 21, 2011
July 19 - 28, 2011

Subjects

Brake Cars & Hoists
Cable Bolts & Trusses
Computer Data Retrieval Issues
Diesel
Electrical Enforcement Consistency
Fatality Review & Library Retrieval Issues
Fire Protection on Conveyor Belt Lines
Hands-on Permissibility
Health Issues
Internal Review Issues
New Miner Act & S&S
Rigging
Seals

**Surface Coal Mine
Safety and Health Inspectors
(LP312C)**

Johnnie Tyler, Coordinator

Schedule

August 16 - 25, 2011

Subjects

Surface Coal Overview
SLAM Risks & Root Cause Process for Accident,
Incident & Violation Analysis
Maintenance, Construction & Repairs Accident
Reduction Program
Thin Seam Highwall Miners
Health Procedures
Surface Haulage Issues
PowerPoint and Inspection Closeout
Electrical
Law, Regulation and Policy
Surface Blasting Technology
Basic Rigging
Advanced Citation & Order Writing
Interviewing and Notetaking
Provisions for Clear Cutting on Surface Mines

Three days of training will be combined with the Mine Construction, Maintenance, and Repairs Safety Workshop and the Surface Haulage Workshop.

Coal Entry Level Mine Safety and Health Inspectors Training

The courses listed in this section are designed for entry level coal mine safety and health inspectors. However, they may be attended by other Federal, state, mining industry, and labor organization personnel.

Training dates are given with each module.

Need More Info? Contact:

Cheryl Stevens
Department of Instructional Services
National Mine Health and Safety Academy
1301 Airport Road
Beaver, West Virginia 25813-9426

TELEPHONE: (304) 256-3236
FAX: (304) 256-3247
E-MAIL: stevens.cheryl@dol.gov

COAL CURRICULUM (MODULES I-VI)

The following chart shows the required core courses for entry level mine safety and health inspectors.

Wellness training is scheduled for each module.
Laptop computer and printer required for all modules.

MODULE I (4 weeks)

Orientation	Law, Regulation, & Policy	Notetaking/Citations and
Introduction to MSHA and Mission	Introduction to Laptops	Orders Writing
Diversity	Effective Writing	Inspector's Portable
	Inspection Procedures (IPAL)	Applications for Laptops

MODULE II (4 weeks)

Mine Act S&S & 104(d)/ Part 45 Contractors	Workplace Examinations	Professionalism
Safety Talks I	Combustible Materials and Rockdusting	Part 48 Training Requirements
Part 50 Reporting	Conference Presentation	Conference Presentation
Requirements & Auditing	Preparation (PP)	Communication
Introduction to Special Investigations/Mine Acts 105(c), 110(c)	Noise/Respirable Dust	IPAL Review A
	Root Cause Analysis	

MODULE III (4 weeks)

Interviewing Techniques	Mine Act 107(a)/103(g)	Fire Protection
Mine Wide Monitoring	Mine Electricity	Simulated Inspection
Courtroom Procedures	Diesel Permissibility	Electrical Permissibility
Ground Control	Shaft and Slope Sinking Inspection	

MODULE IV (3 weeks)

Surface Installation	Longwall	Longwall High Voltage
Roof Control	Ventilation, Mine Maps,	
Articulating Trucks	Gas Detecting Devices	

MODULE V (3 weeks)

Hoisting	Surface Haulage	Drilling and Blasting
Structural Safety		

MODULE VI (3 weeks)

Underground Haulage	Impoundments	Mine Act (103(f), 103(k))
Mine Rescue/Part 49	Electrical Review	General Review
Accident Investigation	IPAL Review B	Overall Review/Graduation

The following courses must be completed, in the field, prior to Module I:

- ◆ Employee Health & Safety
- ◆ Standards of Conduct
- ◆ Employee Accident Reporting
- ◆ Computer Security Awareness
- ◆ Keyboarding – students demonstrate 25 wpm with 75% accuracy

The following online courses must be completed prior to Module II:

- ◆ Hazard Communications
- ◆ Miscellaneous Health Standards
- ◆ Part 48 Training Requirements
- ◆ Professionalism
- ◆ Safety Talks I
- ◆ Part 45 Contractors
- ◆ Behavior Based Safety

This course will be completed after Module II:

- ◆ Safety Talks II (talk given in field, reported to Academy)

The following online course must be completed prior to Module III:

- ◆ Tree Cutting

The following online course must be completed prior to Module V:

- ◆ Structural Safety

The following online courses must be completed prior to Module VI:

- ◆ Miscellaneous Safety Standards
- ◆ Technical Support Overview
- ◆ Wellness

Coal Entry Level Mine Safety and Health Inspectors Training

(Dates include travel days)

GROUP 79

Module VI	November 29 – December 17, 2010	(3 weeks)
-----------	---------------------------------	-----------

GROUP 80

Module IV	September 20 – October 8, 2010	(3 weeks)
Module V	January 24 – February 11, 2011	(3 weeks)
Module VI	May 2 – 20, 2011	(3 weeks)

GROUP 81

Module III	September 13 – October 8, 2010	(4 weeks)
Module IV	January 24 – February 11, 2011	(3 weeks)
Module V	May 2 – 20, 2011	(3 weeks)
Module VI	July 11 – 29, 2011	(3 weeks)

GROUP 82

Module I	September 13 – October 8, 2010	(4 weeks)
Module II	January 24 – February 18, 2011	(4 weeks)
Module III	April 11 – May 6, 2011	(4 weeks)
Module IV	July 11 – 29, 2011	(3 weeks)
Module V	September 12 – 30, 2011	(3 weeks)
Module VI	January 23 – February 10, 2012	(3 weeks)

GROUP 83

Module I	February 28 – March 25, 2011	(4 weeks)
Module II	June 6 – July 1, 2011	(4 weeks)
Module III	September 12 – October 7, 2011	(4 weeks)
Module IV	November 28 – December 16, 2011	(3 weeks)
Module V	February 27 – March 16, 2012	(3 weeks)
Module VI	May 7 – 25, 2012	(3 weeks)

GROUP 84

Module I	May 2 – 27, 2011	(4 weeks)
Module II	July 18 – August 12, 2011	(4 weeks)
Module III	September 12 – October 7, 2011	(4 weeks)
Module IV	January 23 – February 10, 2012	(3 weeks)
Module V	April 9 – 27, 2012	(3 weeks)
Module VI	June 4 – 22, 2012	(3 weeks)

Computer Training Schedule

Contents of each computer class are listed followed by a schedule by course dates. All persons attending, except employees of Federal, state, or local governments, will be charged a tuition fee of \$252.00 for a three-day class; \$168.00 for a two-day class; and \$84.00 for a one-day class.

Additional information may be obtained by contacting the Course Coordinator: Mac A. Carnes (304) 256-3398.

To Enroll Contact:

National Mine Health and Safety Academy
Student Services Branch
1301 Airport Road
Beaver, West Virginia 25813-9426

TELEPHONE: (304) 256-3252
FAX: (304) 256-3251

MICROSOFT® EXCEL 2007 – BASIC

[CT721G]

Excel 2007 is a spreadsheet program that can be used to organize, analyze and attractively present data, such as a budget or sales report. This course requires a prior knowledge of computers. Classroom activities include hands-on work in the Computer Laboratory.

Contents:

- ◆ Excel Basics
- ◆ Entering and Editing Data
- ◆ Modifying a Worksheet
- ◆ Using Functions
- ◆ Formatting Worksheets
- ◆ Printing
- ◆ Creating Charts
- ◆ Using the Help Feature

Technical Coordinator: Mac Carnes
Course Length: 3 days
Tuition: \$252.00
Dates: March 8-10, 2011

MICROSOFT® EXCEL 2007 – INTERMEDIATE

[CT722G]

Excel 2007 is a spreadsheet program that can be used to organize, analyze and attractively present data, such as a budget or sales report. This course requires a prior knowledge of computers and the Basic Excel course. Activities include hands-on work in the Computer Laboratory.

Contents:

- ◆ Working With Large Worksheets
- ◆ Working With Multiple Worksheets and Workbooks
- ◆ Advanced Charting
- ◆ Advanced Formatting
- ◆ Using Templates
- ◆ Additional Functions
- ◆ Protecting Parts of a Worksheet

Technical Coordinator: Mac Carnes
Course Length: 3 days
Tuition: \$252.00
Dates: May 3-5, 2011

MICROSOFT® POWERPOINT 2007

[CT711G]

Microsoft® PowerPoint 2007 is a presentation program that allows users to create overhead slides, speaker notes, audience handouts and outlines – all in a single presentation file. PowerPoint offers powerful tools to help create and organize a presentation step by step. This class includes hands-on work in the Computer Laboratory, and development of a sample presentation.

Contents:

- ◆ Choose the Best Method to Start a Presentation
- ◆ Create a Presentation Using Suggested Content and a Design Template
- ◆ Browse Through a Presentation
- ◆ Enter and Edit Text in a Presentation
- ◆ View a Presentation
- ◆ Insert Slides from Other Presentations
- ◆ Rearrange Slides in a Presentation
- ◆ Create a Folder to Store a Presentation
- ◆ Change Text Alignment and Spacing
- ◆ Find and Replace Text and Fonts
- ◆ Correct Text While Typing
- ◆ Check Spelling and Presentation Styles
- ◆ Add a Header and Footer
- ◆ Choose the Right Print Settings
- ◆ Preview and Print a Presentation
- ◆ Enter and Print Speaker Notes

Technical Coordinator:	Mac Carnes
Course Length:	3 days
Tuition:	\$252.00
Dates:	June 14-16, 2011

MICROSOFT® WORD 2007

[CT706G]

Microsoft® Word 2007 is a word-processing program that is used to compose and update a wide range of business documents. It offers many desktop-publishing features that let you enhance the appearance of documents. Word also has the power and flexibility to produce professional documents quickly and easily.

Contents:

- ◆ Create a Document
- ◆ Edit and Format
- ◆ Present Information in Tables and Columns
- ◆ Work with Graphics/Charts
- ◆ Customize Word for the Way You Work
- ◆ Create Form Letters and Labels
- ◆ Create Forms
- ◆ Work with Footnotes and Bookmarks
- ◆ Work with Tables of Contents and Indexes

Technical Coordinator: Mac Carnes
Course Length: 3 days
Tuition: \$252.00
Dates: August 9-11, 2011

Certification and Qualification Courses

The courses in this section are available to MSHA and industry personnel. Upon successful completion of any of these courses, participants will receive the required MSHA certification for the particular area covered.

Scheduling
at Worksite
Available
Upon Request

Courses marked by this icon may be held at your worksite. If your company or organization would like any of these courses presented onsite, contact Cheryl Stevens at (304) 256-3236. The course can then be scheduled.

QUESTIONS?

If you need more information about contents of a course, contact the technical coordinator for that course at (304) 256-3100 or Cheryl Stevens at (304) 256-3236.

To Enroll Contact:

National Mine Health and Safety Academy
Student Services Branch
1301 Airport Road
Beaver, West Virginia 25813-9426
TELEPHONE: (304) 256-3252
FAX: (304) 256-3251

ANNUAL RETRAINING FOR IMPOUNDMENT QUALIFICATION

[IM602C]

This course provides the annual retraining requirements for qualified impoundment mine safety and health inspectors. Impoundment mine safety and health inspectors are required to receive annual retraining in accordance with the requirements specified in the Code of Federal Regulations [30 CFR 77.107-1(b)].

Please Note:

MSHA Qualification and Certification no longer accepts Social Security Numbers on the application form that you must fill out in order to receive your qualification for impoundment inspection card after successful completion of the course. You will need an MSHA Individual Identification Number, available by applying online at: <http://www.msha.gov/forms/elawsforms/5000-46.htm>

Contents:

- ◆ Reviews of Proper Inspection Procedures
- ◆ Signs of Impoundment Stress
- ◆ Instrumentation Monitoring
- ◆ Construction Monitoring
- ◆ Emergency Action Planning
- ◆ Foundation Analysis
- ◆ Geotechnical Investigations
- ◆ Breakthrough Potential Analysis

Technical Coordinator: Clifford F. Lindsay
Course Length: 4 hours
Tuition: \$48.00
Dates: November 18, 2010
January 20, 2011
April 7, 2011
August 25, 2011

QUALIFICATION FOR IMPOUNDMENT INSPECTION

[IM601C]

Scheduling
at Worksite
Available
Upon Request

This course provides the initial training for personnel who are required to inspect impoundments. Successful completion of this course qualifies the participant to inspect impoundments as required by the Code of Federal Regulations [30 CFR 77.216-3(g)].

Please Note:

MSHA Qualification and Certification no longer accepts Social Security Numbers on the application form that you must fill out in order to receive your qualification for impoundment inspection card after successful completion of the course. You will need an MSHA Individual Identification Number, available by applying online at: <http://www.msha.gov/forms/elawsforms/5000-46.htm>

Contents:

Introductory training on:

- ◆ Recognizing Deficiencies and Signs of Distress
- ◆ Failure Modes
- ◆ Foundation Analysis
- ◆ Geotechnical Investigation
- ◆ Breakthrough Potential Analysis
- ◆ Common Instrumentation
- ◆ Facility Configurations
- ◆ Field Hazard Classifications
- ◆ Reporting Requirements
- ◆ Inspection Forms

Technical Coordinator: Clifford F. Lindsay
Course Length: 8 hours
Tuition: \$84.00
Dates: November 16, 2010
January 19, 2011
April 6, 2011
August 24, 2011

RESPIRABLE COAL MINE DUST SAMPLER CALIBRATION/MAINTENANCE CERTIFICATION

[IH602C]

This course provides the initial training for personnel who are required to calibrate and maintain coal mine dust sampling equipment.

Successful completion of this course certifies the participant to calibrate and maintain respirable coal mine dust sampler units under the current Code of Federal Regulations (30 CFR Parts 70/71/90).

Contents:

- ◆ Properties of the Approved Sampling Unit
- ◆ Responsibilities of the Certified Person for Maintenance and Calibration

Hands-on Instruction:

- ◆ Pump Calibration Procedures
- ◆ Maintenance Requirements
- ◆ Sampling Unit Inspection
- ◆ Pre-Shift Checks of Approved Sampling Unit

Technical Coordinators: William D. McKinney

Robert Cline

Course Length: 8 hours

Tuition: \$84.00

Dates: May 11, 2011

August 3, 2011

RESPIRABLE COAL MINE DUST SAMPLING CERTIFICATION

[IH601C]

This course provides the initial training for personnel who are required to collect coal mine dust samples.

Successful completion of this course certifies the participant to collect and submit respirable coal mine dust samples under the current Code of Federal Regulations (30 CFR Parts 70/71/90).

Contents:

Instruction in the Regulations Governing the Coal Mine Operator's Respirable Dust Sampling Program including:

- ◆ Nature of Respirable Dust Hazards
- ◆ Responsibilities of the Certified Sampler
- ◆ Respirable Dust Sampling Procedures
- ◆ Approved Sampler Units
- ◆ On-Shift Parameter Checks

Hands-on Instructions for Sampling Unit:

- ◆ Assembly
- ◆ Inspection
- ◆ Use

Technical Coordinators: William D. McKinney

Robert Cline

Course Length: 8 hours

Tuition: \$84.00

Dates: May 10, 2011

August 2, 2011

General Courses for MSHA and the Mining Industry

The Academy courses described in this section are available to MSHA and industry personnel.

Scheduling
at Worksite
Available
Upon Request

Courses marked by this icon may be held at your worksite. If your company or organization would like any of these courses presented onsite, contact Cheryl Stevens at (304) 256-3236. The course can then be scheduled.

QUESTIONS?

If you need more information about contents of a course, contact the technical coordinator for that course at (304) 256-3100 or Cheryl Stevens at (304) 256-3236.

To Enroll Contact:

National Mine Health and Safety Academy
Student Services Branch
1301 Airport Road
Beaver, West Virginia 25813-9426

TELEPHONE: (304) 256-3252
FAX: (304) 256-3251

ACCIDENT PREVENTION TECHNIQUES

[SF601G]

Scheduling
at Worksite
Available
Upon Request

This course is designed for safety managers/directors, mine managers, or anyone in the mining industry involved in safety management. Several proven accident reduction techniques are covered during the three-day class.

The course begins with a discussion on the principle of multiple causation and the importance of identifying the significant contributing factors in most mining accidents. Accidents/ incidents are divided into the three levels of causation with examples of each level discussed. Discussions focus on the indirect level of causation through a technique of identifying performance problems as either skill or motivational. Unsafe conditions and unsafe work practices are addressed through job safety analysis and job observation. Stress, safety communications, and effective safety talks will be covered.

The class concludes with a health and safety survey which can identify the strengths and weaknesses of a company's health and safety program.

Contents:

- ◆ Accident/Incident Analysis
- ◆ Analyzing Performance Problems
- ◆ Safety Communications/Promotion
- ◆ Developing Effective Safety Talks
- ◆ Managing Stress
- ◆ Job Safety Analysis
- ◆ Job Observation
- ◆ Accident Investigation
- ◆ Mine Safety Program Rating Procedures

Technical Coordinator: Glen Poe

Course Length: 3 days

Tuition: \$252.00

Dates: *Scheduled upon request*

ELECTRICAL SAFETY FOR COAL MINERS

[EL601C]

Scheduling
at Worksite
Available
Upon Request

This course is designed to provide practical methods and techniques to identify electrical hazards and the appropriate enforcement actions to take to correct them. This course is for coal industry personnel with limited or no electrical expertise.

Contents:

- ◆ Basic Electrical Theory
- ◆ Basic Circuitry
- ◆ Hazard Recognition
- ◆ Grounding
- ◆ Power Distribution Systems
- ◆ Regulations and Policies
- ◆ Personal Safety
- ◆ Inspection of Electrical Equipment
- ◆ Permissibility

NOTE: This course is not intended for Electrical Specialists.

Technical Coordinators: Roy Milam
Art Wooten

Course Length: 3 days

Tuition: \$252.00

Dates: *Scheduled upon request*

ELECTRICAL SAFETY FOR METAL/ NONMETAL MINERS

[EL601M]

Scheduling
at Worksite
Available
Upon Request

This course is designed to provide practical methods and techniques to identify electrical hazards and the appropriate enforcement actions to take to correct them. This course is for metal/nonmetal industry personnel with limited or no electrical expertise.

Contents:

- ◆ Grounding
- ◆ Power Distribution Systems
- ◆ Inspection of Electrical Equipment
- ◆ Regulations and Policies
- ◆ Hazard Recognition
- ◆ Personal Safety

NOTE: This course is not intended for Electrical Specialists.

Technical Coordinators: Roy Milam
Art Wooten

Course Length: 2 days

Tuition: \$168.00

Dates: *Scheduled upon request*

HAZARD COMMUNICATION (HAZCOM)

[IH616G]

This course is designed to provide operators with information necessary to develop an effective HazCom program. It will review the requirements of 30 CFR Part 47, including identification of chemicals at the mine site, determining which chemicals are hazardous, establishing a HazCom Program, and informing miners about chemical hazards and appropriate protection measures.

Contents:

- ◆ Purpose and Scope of the HazCom Standard
- ◆ Operators and Chemicals Covered
- ◆ Identification of Hazardous Chemicals
- ◆ Requirements for a HazCom Program
- ◆ Container Labels and Other Forms of Warning
- ◆ Material Safety Data Sheet (MSDS) Requirements
- ◆ HazCom Training Requirements
- ◆ Availability of HazCom Information
- ◆ Trade Secret Provisions
- ◆ Exemptions

Technical Coordinators: Tom Bonifacio
William D. McKinney
Johnnie Tyler

Course Length: 1 day

Tuition: \$84.00

Dates: *Scheduled upon request*

HOISTS AND ELEVATORS

[HS603C]

Scheduling
at Worksite
Available
Upon Request

This course provides instruction to the student in the basic parts of mine personnel hoists and elevators. It includes discussion of drums, sheaves, and cages, but mainly concentrates on wire ropes and terminations. The class will also cover some of the requirements in the American Society of Mechanical Engineers (ASME) A17.1 and A17.2 which apply to elevators. The student will learn basic wire rope and termination technology and how to use this knowledge to enforce removal criteria according to the Code of Federal Regulations (30 CFR 75.1400 or 56.19000). The student will also learn how to conduct an adequate inspection for personnel hoists and elevators. There are exercises on hazard recognition. This course is for MSHA coal and metal/ nonmetal mine safety and health inspectors and industry personnel.

Contents:

- ◆ Wire Rope Technology
- ◆ Terminations and Attachments
- ◆ Removal Criteria According to 30 CFR
- ◆ How to Apply ASME A17.1 & A17.2
- ◆ Hazard Recognition
- ◆ Inspection Procedure
- ◆ Citation and Order Writing

Technical Coordinator: Joseph Fama
Course Length: 3 days
Tuition: \$252.00
Dates: April 26–28, 2011

INDUSTRIAL HYGIENE: SAMPLING FOR RESPIRABLE SILICA DUST AND NOISE

[IH621M]

(Offered on site)

This class, developed in cooperation with the National Stone, Sand and Gravel Association, **is to be scheduled at your worksite**. It involves two days of classroom work and a full day of on-site sampling for silica and noise. It prepares miners and mine operators to conduct ongoing sampling. Results of noise sampling are available immediately; dust samples require analysis in the laboratory, and the cost of analysis is picked up by the mine operator.

A minimum of 10 students is required; the maximum class size is 15 students.

Contents:

- ◆ Hazards of Silica and Noise
- ◆ Introduction to Industrial Hygiene
- ◆ Sampling Equipment and Techniques Laboratory
- ◆ Record Keeping
- ◆ Calculations
- ◆ Controls

Technical Coordinators: William D. McKinney
Robert Cline

Tuition: \$250.00 per student

Dates: *Limited availability; to be arranged with individual operators*

INSTRUCTOR TRAINING WORKSHOP (PART 48)

[GS643G]

This course is intended to improve the instructional skills, abilities, and knowledge of mine trainers. Participants will be required to select, develop, and present a 15-minute training segment on a health or safety topic in 30 CFR Part 48. The presentation will be videotaped for playback and individual review.

Approval as a Part 48 instructor is a two-part process. (1) You must demonstrate that you have knowledge of the subjects that you will be teaching. This is generally accomplished by submitting a resumé to the local MSHA District showing your mining experience and education. (2) You must demonstrate that you have the ability to teach. Successful completion of this course will enable you to meet this requirement.

Contents:

- ◆ Principles of Adult Instruction
- ◆ Developing Objectives
- ◆ Developing Criterion Test Items
- ◆ Outlining the Training Content
- ◆ Determining the Instructional Methods
- ◆ Developing and Using Training Aids
- ◆ Developing a Lesson Plan
- ◆ Using Facilitation Skills
- ◆ Part 48 Requirements

Technical Coordinator: Belinda Browning
Course Length: 3 days
Tuition: \$252.00
Dates: October 26-28, 2010
January 11-13, 2011
April 19-21, 2011
June 21-23, 2011

INTERMEDIATE TOXICOLOGY

[IH606G]

Scheduling
at Worksite
Available
Upon Request

This course will provide the students with a review of the uptake, distribution, metabolism, and elimination of industrial and environmental chemicals. Dose- and time-response relationships will be discussed. Toxic effects of metals, particulates, solvents, and other chemicals found in the mine environment will be examined.

Contents:

- ◆ Introduction to Fundamental Concepts of Toxicology
- ◆ Review of Terminology Used in Toxicology
- ◆ Comparison of Inhalation, Ingestion, and Dermal Exposures
- ◆ Definition of Endpoints of Toxicity
- ◆ Summary of Acute Versus Chronic Toxicity
- ◆ Discussion of Toxicity Data Used to Develop Exposure Limits for Humans

Instructor:	Michelle Schaper
Technical Coordinator:	William D. McKinney
Course Length:	3 days
Tuition:	\$252.00
Dates:	<i>Scheduled upon request</i>

INTRODUCTION TO MINING

[MS701G]

The mining industry fulfills the important function of providing society's raw materials. Increasingly, mining has become more complex, due to rapid technological changes and comprehensive regulations. This complexity coupled with the industry's rich and traditional use of unique terminology can make understanding mining difficult for persons unfamiliar with it. This course introduces participants to the broad scope of mining, and is for those with little or no mining knowledge. It will provide participants with a working understanding of the various aspects of the industry.

Contents:

- ◆ Mining Terminology
- ◆ Mineral Exploration and Geology
- ◆ Description of the Different Mining Methods
- ◆ Coal Preparation and Mineral Processing

Health and Safety Regulations including:

- ◆ Ground/Roof Control
- ◆ Ventilation and Dust Control
- ◆ Haulage and Hoisting
- ◆ Personal Protective Equipment
- ◆ Mapping
- ◆ Mine Examinations
- ◆ Electricity
- ◆ Explosives
- ◆ Industrial Hygiene

Technical Coordinator: Randy L. Skaggs
Course Length: 3 days
Tuition: \$252.00
Dates: August 2-4, 2011

MARSHALL UNIVERSITY MASTERS OF SAFETY DEGREE (MINING EMPHASIS)

[NEMU003]

Courses will be offered pursuant to the Masters of Safety Degree (Mining Emphasis) program offered by the Academy through Marshall University. Courses will be offered in a blended learning environment using distance learning technology. Online courses are also planned to be offered in the Spring, Summer and Fall 2011 semesters. Marshall University offers courses online through WebCT Vista. This is available to any person enrolled as a Marshall University graduate student. It is extremely important that you be accepted into the program by Marshall University so that any computer issues that may arise can be resolved prior to beginning the course.

Students must be admitted into the program **prior** to course enrollment. Application for Graduate Admission forms may be obtained by calling Cheryl Stevens at (304) 256-3236 or by going online to www.marshall.edu. College Chemistry 203, Math 130 (college algebra), and Physics 101 or the equivalent are prerequisites for admission to this program, as is a minimum undergraduate GPA of 2.5 or being registered as a professional engineer, or scoring at the mean or above on one area of the General GRE.

Enrollment for these online classes will be limited to 25 students and is on a first come first serve basis. First priority will be given to students who have taken courses previously in pursuit of this degree; those persons successfully admitted into the program through Marshall University will be given next preference.

Tuition and other related fees will be determined and posted at a later date. For more information, contact John Rosiek by email at rosiek.john@dol.gov or at (304) 256-3211.

Technical Coordinator: **John Rosiek**
Dates: **Spring 2011**
 Summer 2011
 Fall 2011

MINE ACCIDENT INVESTIGATION TECHNIQUES

[IV601G]

This course is directed towards safety directors, managers, foremen, union safety committee persons, or mining industry (metal/nonmetal or coal) individuals involved in accident investigation. Course content reviews basic guidelines, procedures, and techniques for the preparation and handling of investigations of accidents and other incidents involving health and safety in the mining industry.

Classroom activities and discussions cover reasons for accident investigations, the investigative process, data collection, accident reconstruction, and proper analysis for corrective actions. Hands-on exercises are stressed along with class participation.

Contents:

- ◆ Overview of Accident Investigation
- ◆ Pre-Investigation Activities
- ◆ Accident Reconstruction
- ◆ Photography/Sketching
- ◆ Interviewing Techniques
- ◆ Data Collection and Evaluation
- ◆ Developing Conclusions and Recommendations

Technical Coordinator: David Elkins
Course Length: 3 days
Tuition: \$252.00
Dates: *February 15-17, 2011*

MINE CONSTRUCTION, MAINTENANCE, AND REPAIRS SAFETY

[MS615G]

Scheduling
at Worksite
Available
Upon Request

This course is designed for the mining construction industry, related support groups, mining regulatory agencies, and others that are involved with the planning, design, and application of mine construction and maintenance activities.

Contents:

- ◆ Accident Analysis and Prevention
- ◆ Effective Work Area Examinations
- ◆ Mobile Equipment Examinations
- ◆ Fall Prevention
- ◆ Basic Crane Safety
- ◆ Material Storage and Handling
- ◆ Conveyor Belt Safety
- ◆ Confined Space Safety
- ◆ Wire Ropes and Slings
- ◆ Surface Installations

Technical Coordinator: Tom Bonifacio
Course Length: 2 days
Tuition: \$168.00
Dates: *Scheduled upon request*

MINE ELEVATOR INSPECTION PROGRAM TRAINING – MODULE I

[HS606G]

Scheduling
at Worksite
Available
Upon Request

This training module covers the inspection of mine elevators and the impact of the mine environment on critical elevator components. It will enable the student to perform basic mine elevator inspections, focusing on critical safety concerns, including those identified in recent mine elevator accidents. The material will be correlated to the applicable sections of ASME A17. Many visuals and actual elevator hardware will be used throughout the program.

This module is a stand-alone program for elevators used in harsh environments. It also can be used as the first in a series of modules designed to prepare the student for taking the Qualified Elevator Inspector (QEI) certification examination.

NOTE: Students should bring the latest version of elevator codes ASME A17.1 & A17.2.1 with them, although they are not mandatory.

**Technical Coordinators: Roy Milam
Art Wooten**

Course Length: 2 days

Tuition: \$168.00

**Dates: June 14-15, 2011
August 16-17, 2011**

MINE RESCUE TRAINING

[ME601G]

Scheduling
at Worksite
Available
Upon Request

This course is designed for mine rescue teams and mining industry personnel who may be associated with responding to mine emergencies, such as mine fires, explosions, and inundations. The major part of the training involves participation in exercises in the Mine Simulation Laboratory.

Contents:

- ◆ Mine Emergency Response Overview
- ◆ Mine Emergency Operations
- ◆ Mine Emergency Personnel
- ◆ Mine Emergency Communications and Decision Making
- ◆ Mine Emergency Practices and Procedures
- ◆ Mine Emergency Rescue and Recovery Strategy
- ◆ Tactical Implementation of Operations

Technical Coordinator: Mack Wright

Course Length: 1 day

Tuition: \$84.00*

Dates: *Scheduled upon request*

* Tuition may be waived for mine rescue team members participating in team training activities, up to ten (10) days per calendar year.

NOISE HAZARDS, REGULATION, AND CONTROL

[IH321G]

This course provides the participant with information on the hazards associated with overexposure to noise. It thoroughly reviews 30 CFR Part 62 and appropriate monitoring and control methods. The course also discusses the elements of an effective hearing conservation program.

Contents:

- ◆ Characteristics of Noise
- ◆ Impact of Noise on Health
- ◆ Noise Monitoring
- ◆ Sound Level Meters
- ◆ Dosimeters
- ◆ Octave Band Analysis
- ◆ Audiometric Examinations
- ◆ Noise Regulation - Compliance Discussion
- ◆ Exposure Levels
- ◆ Monitoring
- ◆ Hearing Conservation Programs
- ◆ Training Requirements
- ◆ Control Methods

Technical Coordinators: William D. McKinney
Robert Cline

Course Length: 3 days

Tuition: \$252.00

Dates: *Scheduled upon request*

ROOT CAUSE ANALYSIS WORKSHOP

[SF602G]

Scheduling
at Worksite
Available
Upon Request

The purpose of the Root Cause Analysis Workshop is to begin action toward reducing violations, accidents, and incidents at a mining operation. Root Cause Analysis recognizes that violations, accidents, and incidents are an indicator of a breakdown which allows these occurrences to happen. This method will result in a professional approach to accident prevention, and can act as a training mechanism for workers and mine operators.

Class activities will involve citations and orders issued during an inspection and the incidents and/or accidents that a mine has encountered to initiate a process of analysis that will start an inquiry into questions such as:

- ◆ What is causing these violations, accidents, and incidents to occur at the mining operation?
- ◆ Why does the mine have the same type of violations at each inspection?
- ◆ Why does the mine continue to have the same kind of accidents and incidents?
- ◆ What can be done to eliminate the violations, accidents, and incidents at this mine?

Technical Coordinator: Glen Poe

Course Length: 1 day

Tuition: \$84.00

Dates: *Scheduled upon request*

SURFACE FACILITIES AND COAL PREPARATION

[PP601C]

Scheduling
at Worksite
Available
Upon Request

This course is designed to familiarize the student with equipment and processes used in coal preparation plants; hazards that might exist around preparation plants; and inspection requirements for such plants. This course has been expanded to include structural safety in an effort to eliminate surface structural failures in the mining industry.

Contents:

- ◆ Structural Safety
- ◆ Equipment Guarding
- ◆ Stockpile Safety
- ◆ Delivery Methods to the Plant
- ◆ Crushing, Sizing, and Washing Processes
- ◆ Dewatering and Drying
- ◆ Storage of Raw and Clean Coal
- ◆ Potential Hazards
- ◆ Preparation Plant Inspection

Technical Coordinators: Clifford F. Lindsay
Johnnie Tyler

Course Length: 3 days

Tuition: \$252.00

Dates: *Scheduled upon request*

Seminars/Workshops for MSHA and the Mining Industry

The Academy Seminars/Workshops described in this section are available to MSHA and industry personnel.

QUESTIONS?

If you need more information about contents of a seminar/workshop, contact the technical coordinator for that seminar/workshop at (304) 256-3100 or Cheryl Stevens at (304) 256-3236.

To Enroll Contact:

National Mine Health and Safety Academy
Student Services Branch
1301 Airport Road
Beaver, West Virginia 25813-9426

TELEPHONE: (304) 256-3252
FAX: (304) 256-3251

BLASTING SEMINAR

[EX524G]

This seminar is designed for company managers, blasting engineers, blasters, state and Federal mine safety and health inspectors (coal and metal/nonmetal), and others involved with the planning, design, and the use of explosives in the mining industry. The most recent blasting techniques, trends, and developments will be discussed. Participants will have the opportunity to share ideas in small group sessions.

Contents:

- ◆ Vibration Analysis/Seismographs/Efficient Blasting Techniques
- ◆ Storage of Explosives
- ◆ Handling and Use of Explosives
- ◆ Silica Dust and Toxic Gas Hazards in Blasting
- ◆ Blasting Agents and Emulsions

Technical Coordinator: Douglas Lawson
Course Length: 2 days
Tuition: None
Dates: January 19-20, 2011

FIRST RESPONDER WORKSHOP

[GS645G]

This is a one-day workshop designed to provide MSHA personnel, the mining industry, miners' representatives, firefighters, law enforcement personnel, and emergency medical personnel with information and precautions that should be taken before or while responding to an emergency at surface mines, surface areas of underground mines, and surface mining facilities.

Contents:

- ◆ Emergency response planning
- ◆ Large haul truck fires
- ◆ Structures in and around surface facilities
- ◆ Use of mine equipment for rescue & fire fighting
- ◆ Traffic control on mine roadways
- ◆ First responder vehicle maintenance (Brakes & Steering)

Hazards addressed:

- ◆ Explosives storage
- ◆ Surge piles
- ◆ Draw-off tunnels
- ◆ Fuel storage (stationery and mobile)
- ◆ Belt conveyors
- ◆ Electricity
- ◆ Preparation plants and mills
- ◆ Off road haul trucks and end loaders
- ◆ Highwalls and highwall mining machines
- ◆ Chemicals and gases common to mines and facilities
- ◆ Surface areas of underground mines

Technical Coordinators: Johnnie Tyler
Charlotte Richardson

Course Length: 1 day

Tuition: None

Date: *Scheduled upon request*

MINE CONSTRUCTION, MAINTENANCE, AND REPAIRS SAFETY WORKSHOP

[MS502G]

This workshop is designed for the mining construction industry, related support groups, mining regulatory agencies, and others that are involved with the planning, design, and application of mine construction and maintenance activities.

Topics:

- ◆ Risk Management
- ◆ Contractor Pre-Qualification
- ◆ Hearing Loss Prevention
- ◆ Fire Extinguisher Simulator Training
- ◆ Trenching Regulations and Practices
- ◆ Manitowac Crane Safety
- ◆ Crane Safety Inspections (Hands-on)
- ◆ Prevention of “Rigger Mortis” - A systematic Approach to Rigging
- ◆ Welding Safety
- ◆ Electrical Accidents Analysis and Prevention
- ◆ Construction Blasting
- ◆ Wheels and Rims Safety Hazards
- ◆ Scaffold Safety

Technical Coordinator: Tom Bonifacio

Course Length: 3 days

Tuition: None

Dates: *Scheduled upon request*

ROOF CONTROL SEMINAR

[RC501C]

This seminar is designed for miners, company managers, engineers, trainers, roof bolter machine operators, and for any individual involved in coal mine roof safety. Federal and state enforcement personnel desiring to increase their knowledge of the latest developments in roof and rib control will also find this seminar very beneficial.

This seminar will update personnel on new products and methods related to roof stability. It will also include presentations by personnel from the Academy, Technical Support, MSHA headquarters, other government agencies, and industry. All subjects will incorporate safe mining practices which will help reduce roof fall injuries and fatalities. The seminar will discuss new roof control techniques, trends, and developments.

Contents:

- ◆ New Roof Bolting Products
- ◆ Supplemental Supports
- ◆ Roof Control Fatality Trends and Prevention
- ◆ Roof Control Machinery Updates

Technical Coordinators: Joseph Fama
Jon Braenovich

Course Length: 1 day

Tuition: None

Dates: June 1, 2011

SURFACE HAULAGE WORKSHOP

[HL502G1]

This workshop brings together representatives of the mining industry and others that are involved with the planning, design, and use of surface mine haulage equipment and/or systems. The seminar will provide an opportunity for the participants to exchange information and observe firsthand new technology, equipment, and innovations that are being used in the mining industry. Industry and other technical presenters will provide presentations, exhibits, and equipment displays that allow the participants to interact in small groups with the presenters and each other.

Contents:

- ◆ Equipment Brake Systems
- ◆ Equipment Safety Instructions
- ◆ Tire Care and Maintenance
- ◆ Crane Safety
- ◆ Solutions to Mobile Equipment Blind Spots
- ◆ Dump Point Safety
- ◆ Diesel-Electric Equipment
- ◆ Fire Suppression on Haulage Equipment
- ◆ Haul Roads – Keys to Accident Prevention
- ◆ Hazards and Accident Prevention in Belt Conveyor Operations
- ◆ New Automation Technologies – Conveyor, Plants, Mills
- ◆ Safe Handling and Transport of Bulk Blasting Agents
- ◆ Safety Aspects of Mounting/Demounting Tires
- ◆ Haul Road Design

Technical Coordinator: Roger Montali
Course Length: 2 Days
Tuition: None
Dates: August 23-24, 2011

TRAM/NATIONAL MINE INSTRUCTORS SEMINAR

[GS501G]

This seminar provides opportunities for health and safety trainers to improve their training programs with new materials and new ideas. The seminar will also include an exhibit of training materials developed by MSHA, state grants recipients, and the mining industry. Small workshops allow participants to interact with workshop leaders and other participants.

Contents:

- ◆ Innovative Instructional Techniques
- ◆ Instructional Technology and Computer Applications
- ◆ Underground Mine Safety (Metal/Nonmetal and Coal Topics)
- ◆ Surface Mine Safety (Metal/Nonmetal and Coal Topics)
- ◆ General Safety
- ◆ Health
- ◆ Ergonomics
- ◆ Supervisory Issues

Another feature of the seminar is the Training Materials Competition. Health and safety training materials entered in the competition will be judged and winners will be announced at the Seminar. All materials entered in the competition will be displayed.

Technical Coordinator:	Robert Glatter
Course Length:	2½ days
Tuition:	None
Dates:	October 12-14, 2010 October 11-13, 2011

Technical Specialists Training

MSHA mine safety and health inspectors, supervisors, specialists, administrative, and clerical personnel are to receive a minimum of two weeks advanced training every two years.

Listed below are the groups and dates for which training sessions have been scheduled at the Academy:

Administrative/Clerical/Support Personnel [GS711G - 21 hours]

Coordinator: Judy Burns

August 2-4, 2011

September 13-15, 2011

October 18-20, 2011

Coal Electrical Training [EL401C - 56 hours]

Coordinator: Ed Newcomb

March 1-10, 2011

New Electrical Specialists [EL402G - 56 hours]

Coordinator: Roy Milam

March 29 - April 7, 2011

August 2-11, 2011

Health Specialists [IH401G]

Coordinator: William D. McKinney

(Dates not available at time of publication)

Impoundment Specialists [IM401C - 21 hours]

Coordinator: Clifford F. Lindsay

April 26-28, 2011

MNM Journeyman Mine Safety and Health Inspectors

[LP311M - 56 hours]

Coordinator: Tom Bonifacio

March 15-24, 2011

May 3-12, 2011

Roof Control Specialists [RC401C - 21 hours]

Coordinator: Jon Braenovich

May 17-19, 2011

Special Investigators [IV402G]

Coordinator: Judy Peters

January 4 - 13, 2011 (Module II)

July 18-22, 2011 (Refresher)

August 15 - September 1, 2011 (Module I)

Surface Coal Mine Safety and Health Inspectors

[LP312C - 56 hours]

Coordinator: Johnnie Tyler

August 16-25, 2011

Underground Coal Mine Safety and Health Inspectors

[LP311C - 56 hours]

Coordinator: Richard McDorman

October 19 - 28, 2010

January 25 - February 3, 2011

April 12-21, 2011

July 19-28, 2011

Ventilation Specialists [VN401C - 21 hours]

Coordinator: Scott Mandeville

March 29-31, 2011

Courses and Seminars/Workshops Alphabetically

	Page
Accident Prevention Techniques	78
Annual Retraining for Impoundment Qualification	72
Blasting Seminar	96
Blasting (Surface) (Coal)	41
Blasting (Surface) (MNM)	23
Electrical Hazards.....	24
Electrical Safety for Coal Miners	42, 79
Electrical Safety for Metal/Nonmetal Miners.....	80
First Responder Workshop.....	25, 43, 97
Ground Control Hazards.....	26
Haulage (Surface) (Coal).....	44
Haulage (Surface) (MNM)	27
Hazard Communication (HazCom).....	81
Hoists and Elevators.....	82
Industrial Hygiene.....	45
Industrial Hygiene: Sampling for Respirable Silica Dust and Noise	83
Inspector's Portable Applications for Laptops (IPAL) Review (MNM and Coal)	28, 46
Instructor Training Workshop (Part 48).....	84
Intermediate Toxicology.....	85
Introduction to Mining	86
Longwall Mining and Inspection Procedures	47
Marshall University Masters of Safety Degree	29, 48, 87
Microsoft® Excel 2007 – Basic.....	76
Microsoft® Excel 2007 – Intermediate.....	77

Microsoft® PowerPoint 2007	78
Microsoft® Word 2007	69
Mine Accident Investigation and Report Writing	30, 49
Mine Accident Investigation Techniques	88
Mine Construction, Maintenance, and Repairs Safety	89
Mine Construction, Maintenance, and Repairs Safety Workshop	98
Mine Elevator Inspection Program Training – Module I	31, 50, 90
Mine Rescue Training	91
Noise Hazards, Regulation, and Control	51, 92
Qualification for Impoundment Inspection	73
Respirable Coal Mine Dust Sampler Calibration/ Maintenance Certification	74
Respirable Coal Mine Dust Sampling Certification	75
Roof Control Seminar	52, 99
Root Cause Analysis Workshop	93
Slope and Shaft Sinking Safety	53
Surface Facilities and Coal Preparation	54, 94
Surface Haulage Workshop	100
Tailings Dam and Waste Pile Inspection - Metal/ Nonmetal	32
Training for New Electrical Specialists	55
TRAM/National Mine Instructors Seminar	101
Underground Diesel Equipment/Ventilation	56
Underground Haulage, Transportation, and Machinery (Coal)	57
Underground Ventilation for Metal and Nonmetal Mines ...	33

Schedule of Academy Events By Date

October 2010

October 11-15, 2010

- ◆ TRAM/National Mine Instructors Seminar
10/12-14/2010

October 18-22, 2010

- ◆ Underground Coal Journeyman Retraining
10/19-28/2010

October 25-29, 2010

- ◆ Instructor Training Workshop, Part 48
10/26-28/2010
- ◆ Mine Accident Investigation and Report Writing
10/26 - 11/4/2010

November 2010

November 15-19, 2010

- ◆ Qualification for Impoundment Inspection
11/16/2010
- ◆ Annual Retraining for Impoundment Qualification
11/18/2010

December 2010

December 13-17, 2010

- ◆ Haulage (Surface) (MNM)
12/14-16/2010

January 2011

January 10-14, 2011

- ◆ Special Investigators
1/4-13/2011
- ◆ Instructor Training Workshop, Part 48
1/11-13/2011

January 17-21, 2011

- ◆ Qualification for Impoundment Inspection
1/19/2011
- ◆ Blasting Seminar
1/19-20/2011
- ◆ Annual Retraining for Impoundment Qualification
1/20/2011

January 24-28, 2011

- ◆ Underground Coal Journeyman Retraining
1/25 - 2/3/2011

February 2011

February 28-March 4, 2011

- ◆ Coal Electrical Retraining
3/1-10/2011

March 2011

March 7-11, 2011

- ◆ Basic Excel 2007
3/8-10/2011

March 14-18, 2011

- ◆ Mine Accident Investigation and Report Writing
3/15-24/2011
- ◆ Metal/Nonmetal Journeyman Training
3/15-24/2011

March 28-April 1, 2011

- ◆ Ventilation Specialists Retraining
3/29-31/2011
- ◆ Training for New Electrical Specialists
3/29 - 4/7/2011

April 2011

April 4-8, 2011

- ◆ Qualification for Impoundment Inspection
4/6/2011
- ◆ Annual Retraining for Impoundment Qualification
4/7/2011

April 11-15, 2011

- ◆ Underground Coal Journeyman Retraining
4/12-21/2011

April 18-22, 2011

- ◆ Instructor Training Workshop, Part 48
4/19-21/2011

April 25-29, 2011

- ◆ Hoists and Elevators
4/26-28/2011
- ◆ Impoundment Specialists
4/26-28/2011

May 2011

May 2-6, 2011

- ◆ Intermediate Excel 2007
5/3-5/2011
- ◆ Mine Accident Investigation and Report Writing
5/3-12/2011
- ◆ Metal/Nonmetal Journeyman Training
5/3-12/2011

May 9-13, 2011

- ◆ Respirable Coal Mine Dust Sampling Certification
5/10/2011
- ◆ Respirable Coal Mine Dust Sampler Calibration/
Maintenance Certification
5/11/2011

May 16-20, 2011

- ◆ Roof Control Specialists Retraining
5/17-19/2011

May 30-June 3, 2011

- ◆ Roof Control Seminar
6/1/2011

June 2011

June 13-17, 2011

- ◆ Mine Elevator Inspection
6/14-15/2011
- ◆ Microsoft PowerPoint 2007
6/14-16/2011

June 20-24, 2011

- ◆ Instructor Training Workshop, Part 48
6/21-23/2011
- ◆ Metal/Nonmetal Journeyman Training
6/21-30/2011

July 2011

July 18-22, 2011

- ◆ Special Investigators
7/18-22/2011
- ◆ Underground Coal Journeyman Retraining
7/19-28/2011

August 2011

August 1-5, 2011

- ◆ Respirable Coal Mine Dust Sampling Certification
8/2/2011
- ◆ Administrative, Clerical, and Support Personnel Training
8/2-4/2011
- ◆ Introduction to Mining
8/2-4/2011
- ◆ Training for New Electrical Specialists
8/2-11/2011
- ◆ Respirable Coal Mine Dust Sampler Calibration/
Maintenance Certification
8/3/2011

August 8-12, 2011

- ◆ Microsoft Word 2007
8/9-11/2011

August 15-19, 2011

- ◆ Mine Elevator Inspection
8/16-17/2011
- ◆ Mine Accident Investigation and Report Writing
8/16-25/2011
- ◆ Surface Coal Mine Inspector Training
8/16-25/2011
- ◆ Special Investigators
8/15-9/1/2011

August 22-26, 2011

- ◆ Haulage Workshop
8/23-24/2011
- ◆ Longwall Mining & Inspection Procedures
8/23-25/2011
- ◆ Qualification for Impoundment Inspection
8/24/2011
- ◆ Annual Retraining for Impoundment Qualification
8/25/2011

September 2011

September 12-16, 2011

- ◆ Administrative, Clerical, and Support Personnel Training
9/13-15/2011

October 2011

October 10-14, 2011

- ◆ TRAM/National Mine Instructors Seminar
10/11-13/2011

October 17-21, 2011

- ◆ Administrative, Clerical, and Support Personnel Training
10/18-20/2011

Suggestion Form for New Courses

The National Mine Health and Safety Academy is committed to bring you the very best courses, seminars, and materials to meet your needs. To do this we need your help.

Please use the space below to let us know what you would like.

New courses or variations on existing courses:

Seminars: _____

Materials: _____

Area of interest: *Check those of interest.*

Coal - Surface

Coal - Underground

Metal/Nonmetal - Surface

Metal/Nonmetal - Underground

Both

Other (specify) _____

Name _____

Address _____

Telephone _____ Fax: _____

(area code)

(area code)

E-mail address: _____

Please complete this form and return to:

National Mine Health and Safety Academy
ATTN: Department of Instructional Services

1301 Airport Road

Beaver, West Virginia 25813-9426

OR

FAX: (304) 256-3247

Enrollment Form

Please complete this form and return to:

National Mine Health and Safety Academy
ATTN: Student Services Branch
1301 Airport Road
Beaver, West Virginia 25813-9426
OR
FAX: (304) 256-3251

I plan to attend the _____
course on the following dates: _____

Arrival Date: _____

Departure Date: _____

I will I will not need lodging on these dates.

Name: _____
(LAST) (FIRST) (MIDDLE)

Title: _____

Organization: _____

Address: _____

City: _____

State: _____ **Zip Code:** _____

Telephone: _____ **Fax:** _____
(area code) (area code)

E-mail address: _____

Confirmation will be mailed or faxed to you.

Confirmed by: _____ Date: _____

Other Available Catalogs

The Academy also publishes a Catalog of Training Products for the Mining Industry. To obtain a copy of the products catalog, or additional copies of this catalog, please complete this form and return to:

National Mine Health and Safety Academy
ATTN: Printing and Property Management Branch
Department of Instructional Materials
1301 Airport Road
Beaver, West Virginia 25813-9426
CALL: (304) 256-3257
FAX: (304) 256-3368
E-MAIL: MSHADistributionCenter@dol.gov

Please indicate the number of catalogs you are requesting:

(Number)

_____ Catalog of Training Products for the Mining Industry

_____ Courses for MSHA and the Mining Industry
(additional copies)

Name: _____

Title: _____

Organization: _____

Address: _____

City: _____

State: _____ Zip Code: _____

Telephone: _____ Fax: _____
(area code) (area code)

***Please note: Catalogs referred to on this page
are also available online at www.msha.gov***

Visit the Department of Labor Web site
at www.msha.gov

U.S. Department of Labor

National Mine Health and Safety Academy

1301 Airport Road

Beaver, West Virginia 25813-9426

Official Business

FIRST-CLASS MAIL
POSTAGE & FEES PAID
U.S. DEPARTMENT OF LABOR
Permit No. G-745